

## \$389,000 - 14824 73a Street, Edmonton

MLS® #E4430668

**\$389,000**

4 Bedroom, 2.50 Bathroom, 1,213 sqft

Single Family on 0.00 Acres

Kilkenny, Edmonton, AB

Immaculate Original-Owner Bungalow – A Rare Find! Step into a home where meticulous care meets vibrant living. This pristine bungalow offers a sunlit main floor with vaulted ceilings, three bedrooms, including a primary bedroom with a dual-entry 2-piece ensuite, living room and 4-piece bath. The kitchen is a culinary haven, complete with a central island and large bright windows that create a warm and inviting atmosphere. The finished basement is a true entertainment paradise with a generous family room, built-in bar, additional bedroom, 3-piece bathroom, and a dedicated laundry room. It’s the perfect setting for hosting gatherings or enjoying unforgettable family nights. Outside, the fully fenced backyard features a manicured lawn adorned with vibrant perennials and a private patio, perfect for outdoor entertaining. A double detached garage provides extensive storage and extra parking on the pad. This home isn’t just move-in ready; it’s a lifestyle upgrade.

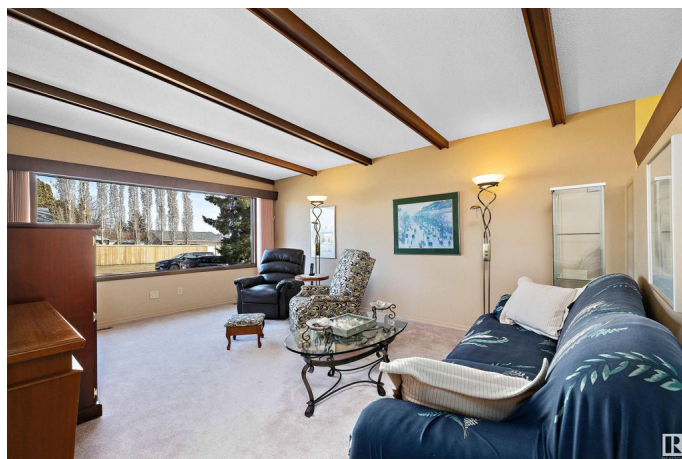
Built in 1969

### Essential Information

MLS® # E4430668

Price \$389,000

Bedrooms 4



Bathrooms	2.50
Full Baths	2
Half Baths	1
Square Footage	1,213
Acres	0.00
Year Built	1969
Type	Single Family
Sub-Type	Detached Single Family
Style	Bungalow
Status	Active

### Community Information

Address	14824 73a Street
Area	Edmonton
Subdivision	Kilkenny
City	Edmonton
County	ALBERTA
Province	AB
Postal Code	T5C 0W4

### Amenities

Amenities	On Street Parking, Detectors Smoke, No Animal Home, No Smoking Home, Parking-Extra, Patio, Vaulted Ceiling
Parking	Double Garage Detached, Over Sized

### Interior

Interior Features	ensuite bathroom
Appliances	Dishwasher-Built-In, Dryer, Freezer, Garage Control, Garage Opener, Hood Fan, Refrigerator, Stove-Electric, Washer, Window Coverings
Heating	Forced Air-1, Natural Gas
Fireplace	Yes
Fireplaces	Brick Facing
Stories	2
Has Basement	Yes
Basement	Full, Finished

### Exterior

Exterior	Wood, Vinyl
Exterior Features	Back Lane, Fenced, Fruit Trees/Shrubs, Golf Nearby, Low Maintenance

Landscape, Paved Lane, Playground Nearby, Public Swimming Pool,  
Public Transportation, Schools, Shopping Nearby

Roof	Asphalt Shingles
Construction	Wood, Vinyl
Foundation	Concrete Perimeter

### **School Information**

Elementary	J A Fife;Father Leo Green
Middle	J J Bowlen; St Cecilia
High	M E Lazerte; Arch O'Leary

### **Additional Information**

Date Listed	April 13th, 2025
Days on Market	6
Zoning	Zone 02

DATA IS DEEMED RELIABLE BUT IS NOT GUARANTEED ACCURATE BY THE REALTORS® ASSOCIATION OF EDMONTON. COPYRIGHT 2025 BY THE REALTORS® ASSOCIATION OF EDMONTON. ALL RIGHTS RESERVED.Trademarks are owned or controlled by the Canadian Real Estate Association (CREA) and identify real estate professionals who are members of CREA (REALTOR®, REALTORS®) and/or the quality of services they provide (MLS®, Multiple Listing Service®)

Listing information last updated on April 19th, 2025 at 1:02am MDT