

\$849,900 - 79 Lilac Bay, Spruce Grove

MLS® #E4429123

\$849,900

3 Bedroom, 2.50 Bathroom, 2,820 sqft

Single Family on 0.00 Acres

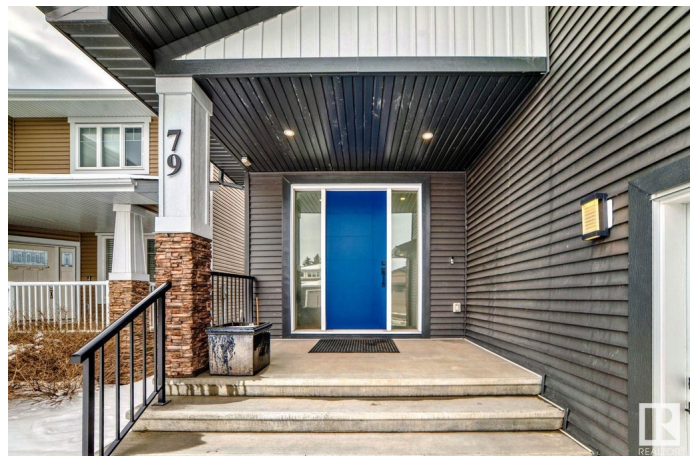
Stoneshire, Spruce Grove, AB

Visit the Listing Brokerage (and/or listing REALTOR®) website to obtain additional information. Luxury 2818 sq ft 3 bed family home with custom finishes throughout! This home has it all: triple car garage with pull through bay, grand front entrance with 2 story foyer, chef's kitchen with massive island, built in Bluetooth sound system, 2 story living room, 2 electric fireplaces and ambient lighting throughout. Upstairs has a bright bonus room, huge sunken master bedroom with French doors, walk in closet, 6-piece bathroom (including 2 person oversized tub!), and private sundeck. Completing the second floor is the laundry room separating the master from jack and jill bedrooms with their own 5 piece bath. The basement has 9' ceilings and is the perfect home gym space, or take advantage of the separate side entrance and develop it as a separate living area.

Built in 2022

Essential Information

MLS® #	E4429123
Price	\$849,900
Bedrooms	3
Bathrooms	2.50
Full Baths	2
Half Baths	1



Square Footage	2,820
Acres	0.00
Year Built	2022
Type	Single Family
Sub-Type	Detached Single Family
Style	2 Storey
Status	Active

Community Information

Address	79 Lilac Bay
Area	Spruce Grove
Subdivision	Stoneshire
City	Spruce Grove
County	ALBERTA
Province	AB
Postal Code	T7X 0V7

Amenities

Amenities	Ceiling 10 ft., Ceiling 9 ft., Closet Organizers, Deck, Detectors Smoke, Exercise Room, Hot Water Natural Gas, Parking-Extra, R.V. Storage, Vaulted Ceiling, Natural Gas BBQ Hookup, Natural Gas Stove Hookup, 9 ft. Basement Ceiling
Parking	Triple Garage Attached

Interior

Interior Features	ensuite bathroom
Appliances	Dishwasher-Built-In, Dryer, Freezer, Oven-Built-In, Oven-Microwave, Refrigerator, Stove-Gas, Washer, Window Coverings, See Remarks
Heating	Forced Air-1, Natural Gas
Fireplace	Yes
Fireplaces	Insert
Stories	2
Has Basement	Yes
Basement	Full, Unfinished

Exterior

Exterior	Wood, Stone, Vinyl
Exterior Features	Fenced, Golf Nearby, Landscaped, Low Maintenance Landscape, No Back Lane
Roof	Asphalt Shingles

Construction	Wood, Stone, Vinyl
Foundation	Concrete Perimeter

Additional Information

Date Listed	April 4th, 2025
Days on Market	15
Zoning	Zone 91

DATA IS DEEMED RELIABLE BUT IS NOT GUARANTEED ACCURATE BY THE REALTORS® ASSOCIATION OF EDMONTON. COPYRIGHT 2025 BY THE REALTORS® ASSOCIATION OF EDMONTON. ALL RIGHTS RESERVED.Trademarks are owned or controlled by the Canadian Real Estate Association (CREA) and identify real estate professionals who are members of CREA (REALTOR®, REALTORS®) and/or the quality of services they provide (MLS®, Multiple Listing Service®)

Listing information last updated on April 18th, 2025 at 9:47pm MDT