

\$200,000 - 408 9519 160 Avenue, Edmonton

MLS® #E4429059

\$200,000

2 Bedroom, 2.00 Bathroom, 828 sqft

Condo / Townhouse on 0.00 Acres

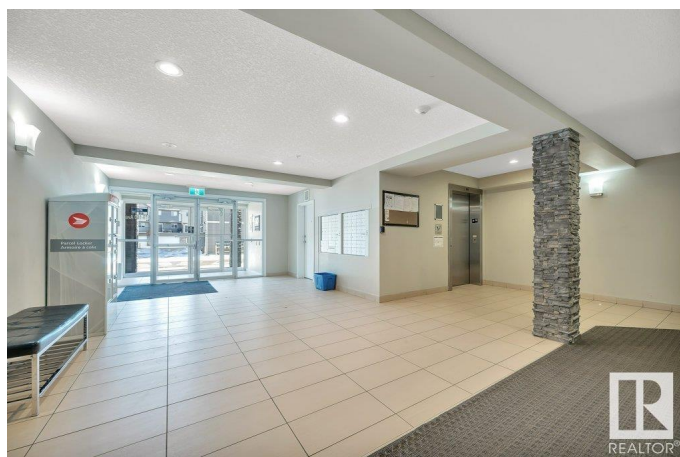
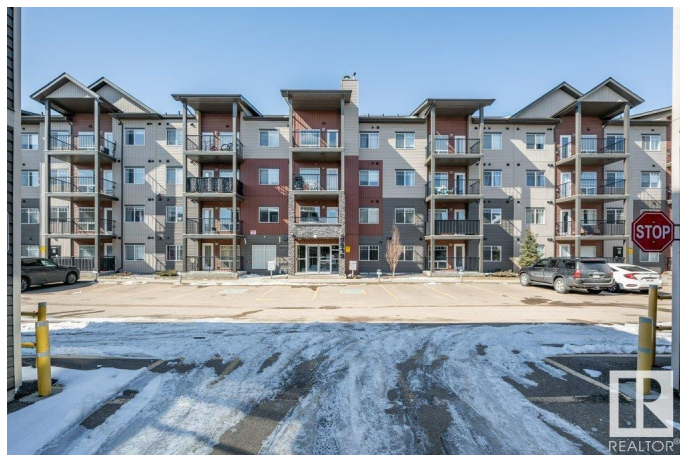
Eaux Claires, Edmonton, AB

TOP FLOOR, 2 bed, 2 bath condo with 2 parking stalls! This bright unit in The Radiance complex in Eaux Claires is steps from all amenities, such as ETS, Save-On-Foods, shopping, plenty of restaurants, medical clinics, and more! Enjoy a west-facing balcony for evening sun. Enjoy the heated floors and INSUITE laundry. The open-concept kitchen with an island and ample cupboard space overlooks the living room. The split-bedroom layout ensures privacy, with the primary suite featuring a walk-through closet and ensuite. Enjoy the convenience of in-suite laundry. Plus, you'll have quick access for your work commute to downtown or the Henday. Includes underground + surface parking. A fantastic opportunity—don't miss out!

Built in 2014

Essential Information

| | |
|----------------|-----------|
| MLS® # | E4429059 |
| Price | \$200,000 |
| Bedrooms | 2 |
| Bathrooms | 2.00 |
| Full Baths | 2 |
| Square Footage | 828 |
| Acres | 0.00 |
| Year Built | 2014 |



| | |
|----------|------------------------|
| Type | Condo / Townhouse |
| Sub-Type | Lowrise Apartment |
| Style | Single Level Apartment |
| Status | Active |

Community Information

| | |
|-------------|---------------------|
| Address | 408 9519 160 Avenue |
| Area | Edmonton |
| Subdivision | Eaux Claires |
| City | Edmonton |
| County | ALBERTA |
| Province | AB |
| Postal Code | T5Z 0M4 |

Amenities

| | |
|-----------|--|
| Amenities | Deck, Parking-Visitor, Secured Parking |
| Parking | Heated, Insulated, Underground |

Interior

| | |
|-------------------|--|
| Interior Features | ensuite bathroom |
| Appliances | Dishwasher-Built-In, Dryer, Microwave Hood Fan, Refrigerator, Stove-Electric, Window Coverings |
| Heating | Forced Air-1, Natural Gas |
| # of Stories | 4 |
| Stories | 4 |
| Has Basement | Yes |
| Basement | None, No Basement |

Exterior

| | |
|-------------------|--|
| Exterior | Wood, Stone, Vinyl |
| Exterior Features | Landscaped, Park/Reserve, Playground Nearby, Public Transportation, Schools, Shopping Nearby |
| Roof | Tar & Gravel |
| Construction | Wood, Stone, Vinyl |
| Foundation | Concrete Perimeter |

School Information

| | |
|------------|------------------|
| Elementary | Florence Hallock |
| Middle | Florence Hallock |

High Queen Elizabeth

Additional Information

Date Listed April 4th, 2025
Days on Market 15
Zoning Zone 28
Condo Fee \$475

DATA IS DEEMED RELIABLE BUT IS NOT GUARANTEED ACCURATE BY THE REALTORS® ASSOCIATION OF EDMONTON. COPYRIGHT 2025 BY THE REALTORS® ASSOCIATION OF EDMONTON. ALL RIGHTS RESERVED.Trademarks are owned or controlled by the Canadian Real Estate Association (CREA) and identify real estate professionals who are members of CREA (REALTOR®, REALTORS®) and/or the quality of services they provide (MLS®, Multiple Listing Service®)
Listing information last updated on April 19th, 2025 at 10:32am MDT