

\$478,000 - 1135 49a Street, Edmonton

MLS® #E4428056

\$478,000

5 Bedroom, 3.00 Bathroom, 1,076 sqft
Single Family on 0.00 Acres

Crawford Plains, Edmonton, AB

Fully Renovated, Total Living Space over 2,150 sqft with Total 5 Bedrooms, 3 Full Washrooms along with Separate Living and Separate Family room. master bedroom have 3pc ensuite. Separate Entrance to the Basement. Massive backyard to enjoy the summers!!!

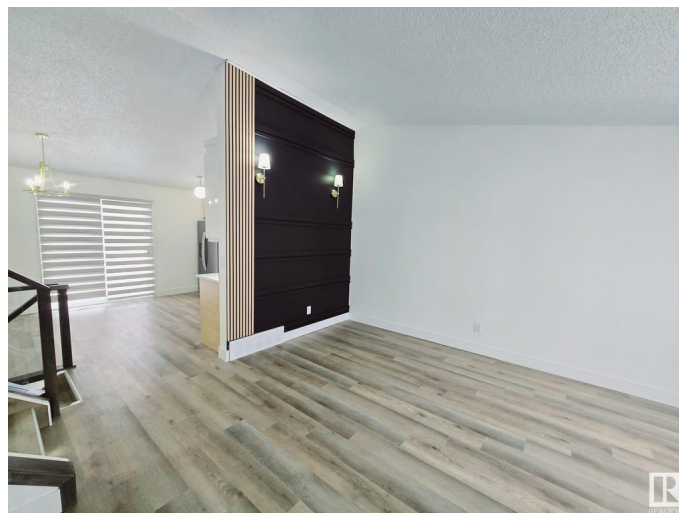
Built in 1989

Essential Information

MLS® #	E4428056
Price	\$478,000
Bedrooms	5
Bathrooms	3.00
Full Baths	3
Square Footage	1,076
Acres	0.00
Year Built	1989
Type	Single Family
Sub-Type	Detached Single Family
Style	4 Level Split
Status	Active

Community Information

Address	1135 49a Street
Area	Edmonton
Subdivision	Crawford Plains



City	Edmonton
County	ALBERTA
Province	AB
Postal Code	T6L 4C5

Amenities

Amenities	Closet Organizers
Parking	Double Garage Attached

Interior

Interior Features	ensuite bathroom
Appliances	Dishwasher-Built-In, Dryer, Stacked Washer/Dryer, Stove-Gas, Washer, Refrigerators-Two
Heating	Forced Air-1, Natural Gas
Fireplace	Yes
Fireplaces	Brick Facing
Stories	4
Has Basement	Yes
Basement	Full, Finished

Exterior

Exterior	Wood, Vinyl
Exterior Features	Public Transportation
Roof	Asphalt Shingles
Construction	Wood, Vinyl
Foundation	Concrete Perimeter

Additional Information

Date Listed	March 28th, 2025
Days on Market	5
Zoning	Zone 29

DATA IS DEEMED RELIABLE BUT IS NOT GUARANTEED ACCURATE BY THE REALTORS® ASSOCIATION OF EDMONTON. COPYRIGHT 2025 BY THE REALTORS® ASSOCIATION OF EDMONTON. ALL RIGHTS RESERVED. Trademarks are owned or controlled by the Canadian Real Estate Association (CREA) and identify real estate professionals who are members of CREA (REALTOR®, REALTORS®) and/or the quality of services they provide (MLS®, Multiple Listing Service®)

Listing information last updated on April 1st, 2025 at 11:02pm MDT