

\$289,980 - 143 219 Charlotte Way, Sherwood Park

MLS® #E4427587

\$289,980

4 Bedroom, 3.50 Bathroom, 1,127 sqft
Condo / Townhouse on 0.00 Acres

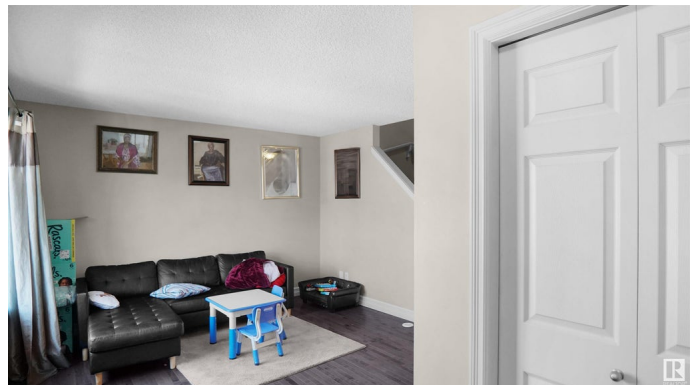
Lakeland Ridge, Sherwood Park, AB

This is the perfect starter home or a seasoned investor. This lovely townhome is located in Lakeland Ridge. The main floor offers a good sized living room, kitchen with nook area and access to deck and fenced off yard which backs the green space. The main floor level also has a 2 piece bath. The upper level has the primary bedroom with an large closet and a full 4 piece bath. The additional 2 bedrooms are a good size and share another 4 piece bath which complete the second level The fully finished basement has a full size bedroom a large rec room and a 3 piece bath. Lakeland Ridge is a well maintained complex with a low condo offering visitor parking and is walking distance to parks, schools and walking trails. Easy access to the yellowhead.

Built in 2012

Essential Information

MLS® #	E4427587
Price	\$289,980
Bedrooms	4
Bathrooms	3.50
Full Baths	3
Half Baths	1
Square Footage	1,127
Acres	0.00



Year Built	2012
Type	Condo / Townhouse
Sub-Type	Townhouse
Style	2 Storey
Status	Active

Community Information

Address	143 219 Charlotte Way
Area	Sherwood Park
Subdivision	Lakeland Ridge
City	Sherwood Park
County	ALBERTA
Province	AB
Postal Code	T8H 0T3

Amenities

Amenities	See Remarks
Parking Spaces	2
Parking	2 Outdoor Stalls

Interior

Interior Features	ensuite bathroom
Appliances	Dishwasher-Built-In, Dryer, Refrigerator, Stove-Electric, Washer, Window Coverings
Heating	Forced Air-1, Heat Pump, Natural Gas
Stories	3
Has Basement	Yes
Basement	Full, Finished

Exterior

Exterior	Wood, Vinyl
Exterior Features	Fenced, Golf Nearby, Landscaped, Playground Nearby, Public Swimming Pool, Public Transportation, Schools, Shopping Nearby, See Remarks
Roof	Asphalt Shingles
Construction	Wood, Vinyl
Foundation	Concrete Perimeter

Additional Information

Date Listed	March 26th, 2025
-------------	------------------

Days on Market	8
Zoning	Zone 25
Condo Fee	\$227

DATA IS DEEMED RELIABLE BUT IS NOT GUARANTEED ACCURATE BY THE REALTORS® ASSOCIATION OF EDMONTON. COPYRIGHT 2025 BY THE REALTORS® ASSOCIATION OF EDMONTON. ALL RIGHTS RESERVED. Trademarks are owned or controlled by the Canadian Real Estate Association (CREA) and identify real estate professionals who are members of CREA (REALTOR®, REALTORS®) and/or the quality of services they provide (MLS®, Multiple Listing Service®)

Listing information last updated on April 3rd, 2025 at 3:18pm MDT