

\$220,000 - 116 11615 Ellerslie Road, Edmonton

MLS® #E4427117

\$220,000

2 Bedroom, 2.00 Bathroom, 912 sqft
Condo / Townhouse on 0.00 Acres

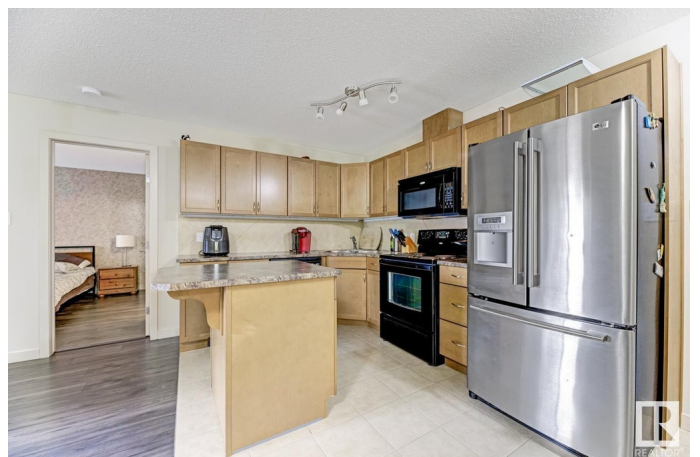
Rutherford (Edmonton), Edmonton, AB

Stunning 2-Bedroom Condo in Sought-After Rutherford Gate! Welcome to Rutherford Gate, a highly desirable complex offering premium amenities, including an onsite fitness center, social room, rentable guest suite, and heated underground parking with a storage cage. With shopping and transit right at your doorstep, convenience is unmatched! This SHOWSUITE-worthy 2-bedroom, 2-bathroom condo showcases pride of ownership throughout. Designed with an upgraded open-concept layout, the unit features: -Two walk-in closets for ample storage -Elegant maple cabinetry and a large island kitchen with stainless steel fridge -Ceramic tile and laminate flooring for a modern, low-maintenance finish -A spacious outdoor patio with a gas hookup, perfect for summer BBQs Donâ€™t miss this incredible opportunity to own in one of the best locations in Rutherford.

Built in 2007

Essential Information

MLS® #	E4427117
Price	\$220,000
Bedrooms	2
Bathrooms	2.00
Full Baths	2



Square Footage	912
Acres	0.00
Year Built	2007
Type	Condo / Townhouse
Sub-Type	Lowrise Apartment
Style	Single Level Apartment
Status	Active

Community Information

Address	116 11615 Ellerslie Road
Area	Edmonton
Subdivision	Rutherford (Edmonton)
City	Edmonton
County	ALBERTA
Province	AB
Postal Code	T6W 0J3

Amenities

Amenities	Exercise Room, Guest Suite, Parking-Visitor, Patio, Storage-Locker Room, Natural Gas BBQ Hookup
Parking	Heated, Underground

Interior

Interior Features	ensuite bathroom
Appliances	Dishwasher-Built-In, Dryer, Microwave Hood Fan, Refrigerator, Stove-Electric, Washer
Heating	Baseboard, Natural Gas
# of Stories	4
Stories	1
Has Basement	Yes
Basement	None, No Basement

Exterior

Exterior	Wood, Stone, Vinyl
Exterior Features	Playground Nearby, Public Transportation, Schools, Shopping Nearby, See Remarks
Roof	Asphalt Shingles
Construction	Wood, Stone, Vinyl
Foundation	Concrete Perimeter

Additional Information

Date Listed March 23rd, 2025

Days on Market 6

Zoning Zone 55

Condo Fee \$584

DATA IS DEEMED RELIABLE BUT IS NOT GUARANTEED ACCURATE BY THE REALTORS® ASSOCIATION OF EDMONTON. COPYRIGHT 2025 BY THE REALTORS® ASSOCIATION OF EDMONTON. ALL RIGHTS RESERVED. Trademarks are owned or controlled by the Canadian Real Estate Association (CREA) and identify real estate professionals who are members of CREA (REALTOR®, REALTORS®) and/or the quality of services they provide (MLS®, Multiple Listing Service®)

Listing information last updated on March 29th, 2025 at 6:47am MDT