

# \$547,200 - 9833 68 Avenue, Edmonton

MLS® #E4427078

**\$547,200**

5 Bedroom, 2.00 Bathroom, 1,206 sqft  
Single Family on 0.00 Acres

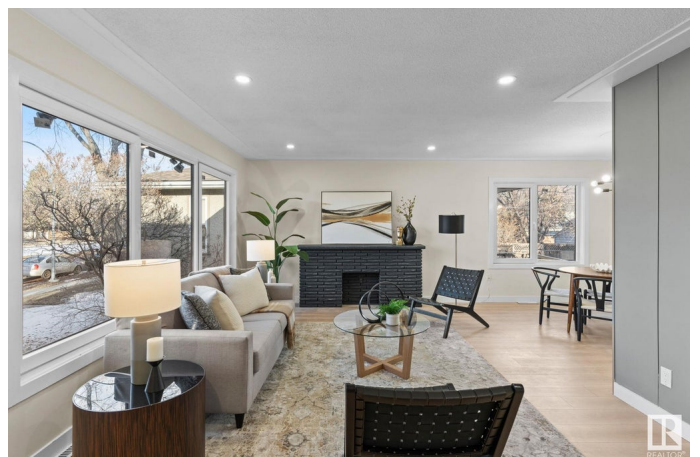
Hazeldean, Edmonton, AB

ACROSS FROM MILL CREEK RAVINE TRAIL, some of the finest walking trails in Edmonton! This NEWLY RENOVATED home in sought after Hazeldean features 5 BEDROOMS, 2 BATHS, and a SEPARATE ENTRANCE to a NEWLY RENOVATED IN-LAW SUITE! Inside: OPEN CONCEPT, STUNNING CUSTOM CABINETS, QUARTZ COUNTERS, POLISHED TILE, POT LIGHTS, LED LIGHTING, and UPGRADED STAINLESS APPLIANCES. BRAND NEW GERMAN TILT & TURN WINDOWS flood the home with natural light. HUGE PRIMARY BEDROOM with oversized closet, GARDEN WINDOWS throughout, and a BRIGHT, EXPANSIVE LIVING ROOM. Outside: DOUBLE DETACHED GARAGE and LARGE FENCED YARD. This one is the FULL PACKAGEâ€”LOCATION & UPGRADES!

Built in 1956

## Essential Information

MLS® #	E4427078
Price	\$547,200
Bedrooms	5
Bathrooms	2.00
Full Baths	2
Square Footage	1,206
Acres	0.00



Year Built	1956
Type	Single Family
Sub-Type	Detached Single Family
Style	Raised Bungalow
Status	Active

### **Community Information**

Address	9833 68 Avenue
Area	Edmonton
Subdivision	Hazeldean
City	Edmonton
County	ALBERTA
Province	AB
Postal Code	T6E 0R4

### **Amenities**

Amenities	Off Street Parking, On Street Parking, Hot Water Natural Gas, No Animal Home, No Smoking Home, Vinyl Windows, See Remarks
Parking Spaces	4
Parking	Double Garage Detached

### **Interior**

Appliances	Dryer, Garage Opener, Hood Fan, Washer, Refrigerators-Two, Stoves-Two
Heating	Forced Air-1, Natural Gas
Stories	2
Has Basement	Yes
Basement	Full, Finished

### **Exterior**

Exterior	Wood, Stucco
Exterior Features	Back Lane, Fenced, Playground Nearby, Schools, Shopping Nearby, See Remarks
Roof	Asphalt Shingles
Construction	Wood, Stucco
Foundation	Concrete Perimeter

### **School Information**

Elementary	Hazeldean School
Middle	J.H Picard

High

J.H Picard

### **Additional Information**

Date Listed March 22nd, 2025

Days on Market 8

Zoning Zone 17

DATA IS DEEMED RELIABLE BUT IS NOT GUARANTEED ACCURATE BY THE REALTORS® ASSOCIATION OF EDMONTON. COPYRIGHT 2025 BY THE REALTORS® ASSOCIATION OF EDMONTON. ALL RIGHTS RESERVED. Trademarks are owned or controlled by the Canadian Real Estate Association (CREA) and identify real estate professionals who are members of CREA (REALTOR®, REALTORS®) and/or the quality of services they provide (MLS®, Multiple Listing Service®)

Listing information last updated on March 30th, 2025 at 7:02am MDT