

# \$888,800 - 634 Cheriton Crescent, Edmonton

MLS® #E4426693

**\$888,800**

4 Bedroom, 3.50 Bathroom, 2,752 sqft

Single Family on 0.00 Acres

Carter Crest, Edmonton, AB

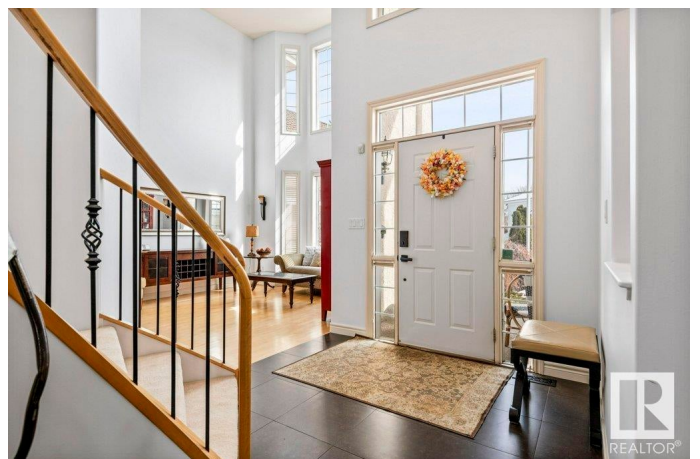
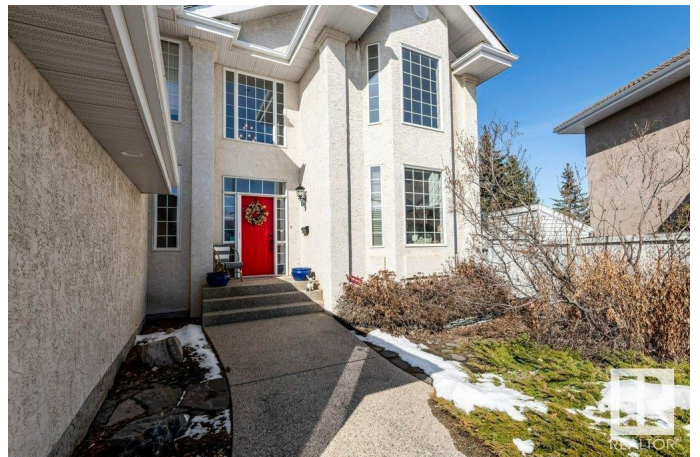
Custom Built GABLE HOMES Masterpiece on an Incredibly PRIVATE PIE Shaped Lot backing the park in Carter Crest! Elegant and Airy throughout, this home features over 4000 SQFT in total with 9FT Ceilings on the Main and Lower Level. Main Floor Hosting TWO Living Spaces - BOTH with Impressive 2 Storey Ceilings - Main Floor Den, Large Mudroom, Spacious Kitchen with Adjoining Laundry Room - Could be converted to a BUTLER PANTRY or SPICE KITCHEN. Upper Level with MASSIVE Primary RETREAT overlooking the park, HUGE Walk-In Closet, and Enormous Ensuite. Generous Secondary Bedrooms and Family Bathroom. Fully Finished Basement with Wet Bar, Entertaining Spaces, Bedroom, Bathroom and Storage. Upgrades included: Air Conditioned, 2 Furnaces (2020), 2 HWT (1 - 2020), Irrigation System. Garage Dimensions: 19'10 x 20'10. All this located on in Private Cul-de-Sac location close to Top Schools, Parks, and great access to anywhere in Edmonton - the very BEST that Riverbend has to offer!!

Built in 1997

## Essential Information

MLS® # E4426693

Price \$888,800



|                |                        |
|----------------|------------------------|
| Bedrooms       | 4                      |
| Bathrooms      | 3.50                   |
| Full Baths     | 3                      |
| Half Baths     | 1                      |
| Square Footage | 2,752                  |
| Acres          | 0.00                   |
| Year Built     | 1997                   |
| Type           | Single Family          |
| Sub-Type       | Detached Single Family |
| Style          | 2 Storey               |
| Status         | Active                 |

### **Community Information**

|             |                       |
|-------------|-----------------------|
| Address     | 634 Cheriton Crescent |
| Area        | Edmonton              |
| Subdivision | Carter Crest          |
| City        | Edmonton              |
| County      | ALBERTA               |
| Province    | AB                    |
| Postal Code | T6R 2M5               |

### **Amenities**

|                |  |
|----------------|--|
| Amenities      | Air Conditioner, Bar, Ceiling 9 ft., Deck, No Smoking Home |
| Parking Spaces | 4  |
| Parking        | Double Garage Attached                                     |

### **Interior**

|                   |  |
|-------------------|--|
| Interior Features | ensuite bathroom   |
| Appliances        | Air Conditioning-Central, Dishwasher-Built-In, Dryer, Freezer, Refrigerator, Washer, Wet Bar |
| Heating           | Forced Air-2, Natural Gas  |
| Fireplace         | Yes  |
| Fireplaces        | Insert, Tile Surround  |
| Stories           | 3  |
| Has Basement      | Yes  |
| Basement          | Full, Finished   |

### **Exterior**

|          |              |
|----------|--------------|
| Exterior | Wood, Stucco |
|----------|--------------|

|                   |   |
|-------------------|---|
| Exterior Features | Backs Onto Park/Trees, Cul-De-Sac, Fenced, Schools, Shopping Nearby |
| Roof              | Cedar Shakes  |
| Construction      | Wood, Stucco  |
| Foundation        | Concrete Perimeter  |

### **School Information**

|            |                 |
|------------|-----------------|
| Elementary | GEORGE H LUCK   |
| Middle     | RIVERBEND       |
| High       | LILLIAN OSBORNE |

### **Additional Information**

|                |                  |
|----------------|------------------|
| Date Listed    | March 20th, 2025 |
| Days on Market | 11               |
| Zoning         | Zone 14          |
| HOA Fees       | 216.58           |
| HOA Fees Freq. | Annually         |

DATA IS DEEMED RELIABLE BUT IS NOT GUARANTEED ACCURATE BY THE REALTORS® ASSOCIATION OF EDMONTON. COPYRIGHT 2025 BY THE REALTORS® ASSOCIATION OF EDMONTON. ALL RIGHTS RESERVED. Trademarks are owned or controlled by the Canadian Real Estate Association (CREA) and identify real estate professionals who are members of CREA (REALTOR®, REALTORS®) and/or the quality of services they provide (MLS®, Multiple Listing Service®)

Listing information last updated on March 31st, 2025 at 5:17pm MDT