

\$495,000 - 23 Landon Drive, Spruce Grove

MLS® #E4426574

\$495,000

4 Bedroom, 3.00 Bathroom, 1,386 sqft
Single Family on 0.00 Acres

Lakewood_SPGR, Spruce Grove, AB

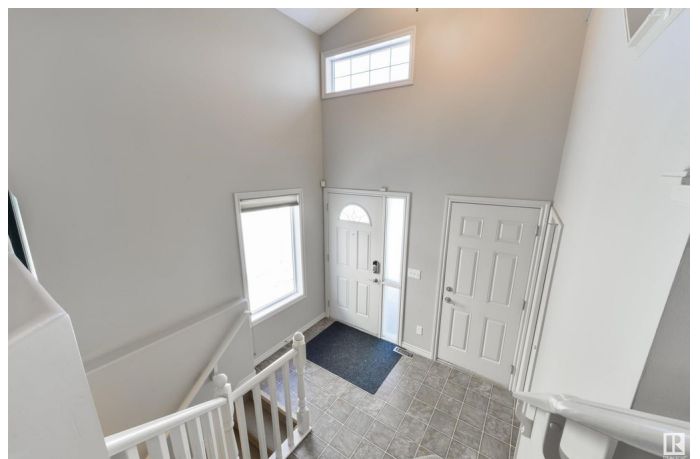
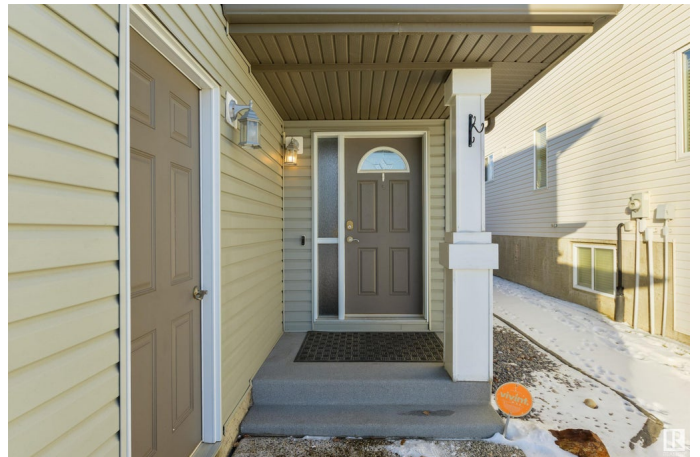
Hello gorgeous! Fully-finished with a wide open floor plan, this is the home you've been waiting for! Features here include central A/C, vaulted ceilings, a lovely kitchen with GRANITE countertops, center island, corner pantry, and separate dinette, a large living room with gas fireplace, 4 total bedrooms including an upper-level owner's suite with a MASSIVE walk-in closet & 4pc ensuite, and a finished basement.

Outside you'll find a HUGE 2-tiered exterior deck – perfect for entertaining your family & friends, and a landscaped & fenced yard with a desirable WEST-FACING exposure. Within walking distance to playgrounds, trails, & the Century Crossing shopping district, you'll love the easy access to commuter highways from here.

Built in 2006

Essential Information

MLS® #	E4426574
Price	\$495,000
Bedrooms	4
Bathrooms	3.00
Full Baths	3
Square Footage	1,386
Acres	0.00
Year Built	2006



Type	Single Family
Sub-Type	Detached Single Family
Style	Bi-Level
Status	Active

Community Information

Address	23 Landon Drive
Area	Spruce Grove
Subdivision	Lakewood_SPGR
City	Spruce Grove
County	ALBERTA
Province	AB
Postal Code	T7X 4S1

Amenities

Amenities	Air Conditioner, Deck, No Smoking Home, Vaulted Ceiling, See Remarks
Parking	Double Garage Attached

Interior

Interior Features	ensuite bathroom
Appliances	Dishwasher-Built-In, Dryer, Garage Control, Garage Opener, Microwave Hood Fan, Refrigerator, Storage Shed, Stove-Electric, Washer, Window Coverings
Heating	Forced Air-1, Natural Gas
Fireplace	Yes
Fireplaces	See Remarks
Stories	3
Has Basement	Yes
Basement	Full, Finished

Exterior

Exterior	Wood, Vinyl
Exterior Features	Fenced, Flat Site, Landscaped, Playground Nearby, Public Transportation, Schools, Shopping Nearby, See Remarks
Roof	Asphalt Shingles
Construction	Wood, Vinyl
Foundation	Concrete Perimeter

Additional Information

Date Listed March 20th, 2025

Days on Market 14

Zoning Zone 91

DATA IS DEEMED RELIABLE BUT IS NOT GUARANTEED ACCURATE BY THE REALTORS® ASSOCIATION OF EDMONTON. COPYRIGHT 2025 BY THE REALTORS® ASSOCIATION OF EDMONTON. ALL RIGHTS RESERVED. Trademarks are owned or controlled by the Canadian Real Estate Association (CREA) and identify real estate professionals who are members of CREA (REALTOR®, REALTORS®) and/or the quality of services they provide (MLS®, Multiple Listing Service®)

Listing information last updated on April 2nd, 2025 at 11:02pm MDT