

\$698,000 - 1 52313 Twp Rd 24, Rural Parkland County

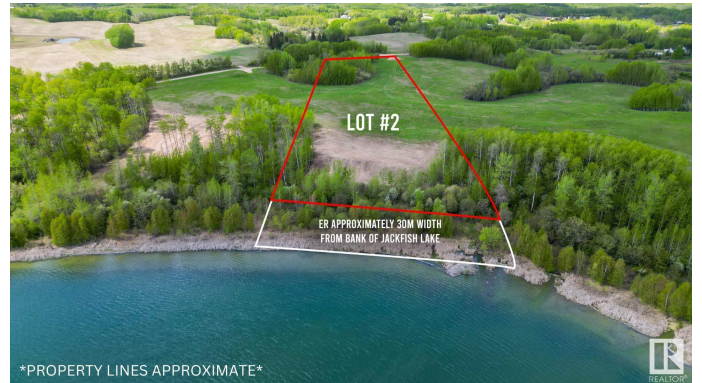
MLS® #E4426120

\$698,000

0 Bedroom, 0.00 Bathroom,
Rural on 5.40 Acres

Jackfish Lake, Rural Parkland County, AB

Build your dream lakefront estate on south-facing Lot 2 at Jackfish Lake, located just 45 minutes from downtown Edmonton and only 20 minutes from Spruce Grove. This 5.4+/- acre lot features 285 feet of pristine shoreline, perfect for swimming, fishing, and boating. The quick drop-off in water depth allows for a shorter dock, giving you easy and direct lake access. The natural landscape offers a peaceful setting, surrounded by mature trees for privacy. With power and gas at the property line. Don't miss this rare opportunity to own lakefront property in one of Alberta's most sought-after locations!



Essential Information

| | |
|-----------|-----------------|
| MLS® # | E4426120 |
| Price | \$698,000 |
| Bathrooms | 0.00 |
| Acres | 5.40 |
| Type | Rural |
| Sub-Type | Vacant Lot/Land |
| Status | Active |

Community Information

| | |
|-------------|-----------------------|
| Address | 1 52313 Twp Rd 24 |
| Area | Rural Parkland County |
| Subdivision | Jackfish Lake |

| | |
|-------------|-----------------------|
| City | Rural Parkland County |
| County | ALBERTA |
| Province | AB |
| Postal Code | T0E 0H0 |

Exterior

Exterior Features Boating, Lake Access Property, Lake View, Park/Reserve, Private Setting, Recreation Use, River View, Treed Lot, Waterfront Property

Additional Information

| | |
|----------------|------------------|
| Date Listed | March 17th, 2025 |
| Days on Market | 16 |
| Zoning | Zone 97 |

DATA IS DEEMED RELIABLE BUT IS NOT GUARANTEED ACCURATE BY THE REALTORS® ASSOCIATION OF EDMONTON. COPYRIGHT 2025 BY THE REALTORS® ASSOCIATION OF EDMONTON. ALL RIGHTS RESERVED. Trademarks are owned or controlled by the Canadian Real Estate Association (CREA) and identify real estate professionals who are members of CREA (REALTOR®, REALTORS®) and/or the quality of services they provide (MLS®, Multiple Listing Service®)

Listing information last updated on April 2nd, 2025 at 4:02am MDT