

\$269,900 - 6123 38 Avenue, Edmonton

MLS® #E4426096

\$269,900

3 Bedroom, 1.50 Bathroom, 1,100 sqft
Condo / Townhouse on 0.00 Acres

Hillview, Edmonton, AB

STUNNING TURN KEY PROPERTY! THIS 1100 SQ FT UNIT HAS BEEN REMODELLED FEAT. OVER \$30,000 IN UPGRADES.

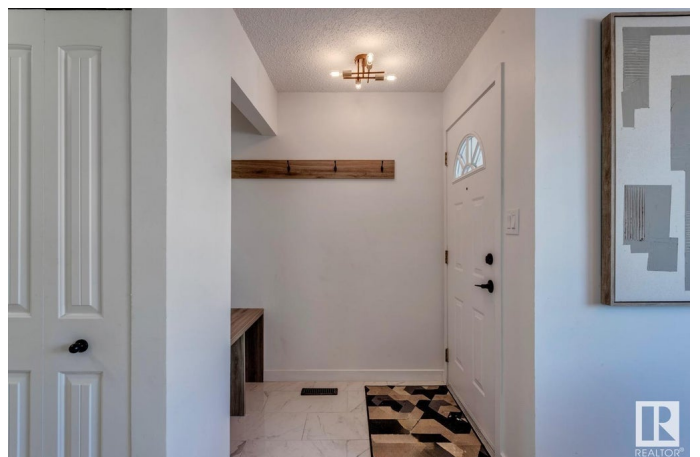
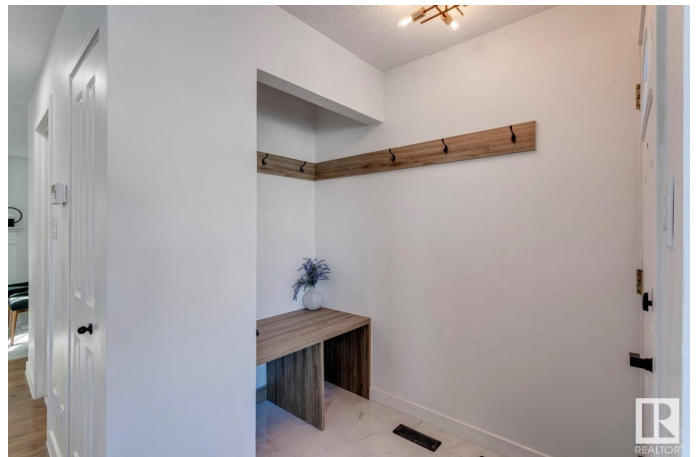
Completely remodelled 2 storey townhome feat. 3 bedrooms & 2 baths. Upon entering you are greeted by laminate flooring which spans the entire main floor. Main floor features a wood fireplace with stone surround. Stunning chefs dream kitchen feat. an abundance of gorgeous white cabinetry with black hardware, complimented by new QUARTZ countertops, SUBWAY tiled backsplash, along with a full set of 4 S.S appliances. Stairs & upper level feat brand new carpeting throughout. Upper level also feat 3 bedrooms, & the main 4 piece SPA LIKE bath, which has been redone with a new vanity, new mirror, new lighting, new toilet & tub, new hardware, & new Carrara 12 X 24 tile throughout the shower. Other upgrades include: finished basement, iron railings, new B.B, new trim, designer lighting, new plumbing fixtures, new doors, new closets, new Decora plug ins & switches, freshly painted, & professionally managed.

Built in 1980

Essential Information

MLS® # E4426096

Price \$269,900



Bedrooms	3
Bathrooms	1.50
Full Baths	1
Half Baths	1
Square Footage	1,100
Acres	0.00
Year Built	1980
Type	Condo / Townhouse
Sub-Type	Townhouse
Style	2 Storey
Status	Active

Community Information

Address	6123 38 Avenue
Area	Edmonton
Subdivision	Hillview
City	Edmonton
County	ALBERTA
Province	AB
Postal Code	T6L 3Z5

Amenities

Amenities	Detectors Smoke, Exterior Walls- 2"x6", Parking-Visitor, Smart/Program. Thermostat, See Remarks
Parking	Stall

Interior

Appliances	Dishwasher-Built-In, Dryer, Microwave Hood Fan, Refrigerator, Stove-Electric, Washer
Heating	Forced Air-1, Natural Gas
Fireplace	Yes
Fireplaces	Stone Facing
Stories	2
Has Basement	Yes
Basement	Full, Finished

Exterior

Exterior	Wood, Vinyl
Exterior Features	Fenced, Flat Site, Golf Nearby, Landscaped, Low Maintenance

Landscape, Playground Nearby, Public Transportation, Schools, Shopping Nearby, See Remarks

Roof Asphalt Shingles
Construction Wood, Vinyl
Foundation Concrete Perimeter

Additional Information

Date Listed March 17th, 2025
Days on Market 16
Zoning Zone 29
Condo Fee \$355

DATA IS DEEMED RELIABLE BUT IS NOT GUARANTEED ACCURATE BY THE REALTORS® ASSOCIATION OF EDMONTON. COPYRIGHT 2025 BY THE REALTORS® ASSOCIATION OF EDMONTON. ALL RIGHTS RESERVED. Trademarks are owned or controlled by the Canadian Real Estate Association (CREA) and identify real estate professionals who are members of CREA (REALTOR®, REALTORS®) and/or the quality of services they provide (MLS®, Multiple Listing Service®)

Listing information last updated on April 2nd, 2025 at 11:17am MDT