

## \$509,700 - 52 Chelsea Way, Sherwood Park

MLS® #E4425880

**\$509,700**

4 Bedroom, 3.00 Bathroom, 1,766 sqft

Single Family on 0.00 Acres

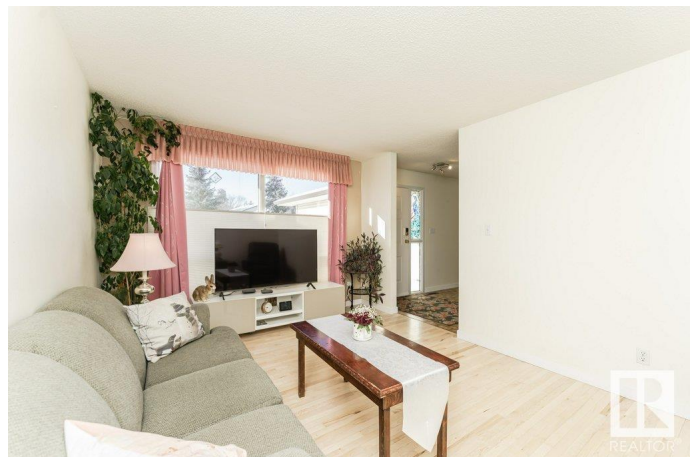
Chelsea Heights, Sherwood Park, AB

Location! Location ! Location! Fantastic Family location in Chelsea Heights backing onto walkway and greenbelt. Entering this home you will find refurbished hardwood floors in front living room. Cross the hall Dining room or flex room for the modern family. Kitchen features Granicrete countertops and plenty of cabinetry along with patio doors leading to deck with Gazebo and Hot Tub ! Coffee Bar area in kitchen overlooks the main floor family room with Hardwood floors and Woodburning Fireplace. 2 piece powder room and entry to Att'd Dble garage complete the main floor. Upstairs you will be treated to CORK flooring and the primary bedroom has a walk-in closet along with a 3 pce ensuite. Two additional bedrooms and a full bath finish the upper level. Basement is partially developed with an office area - Storage areas , 2 piece bath with RI for future shower and laundry area (there is also laundry in 2nd Bdrm on upper floor). Outside you will find a massive Deck-Gazebo - Hot Tub - Sheds Dog Run and more!

Built in 1990

### Essential Information

MLS® #	E4425880
Price	\$509,700
Bedrooms	4



Bathrooms	3.00
Full Baths	2
Half Baths	2
Square Footage	1,766
Acres	0.00
Year Built	1990
Type	Single Family
Sub-Type	Detached Single Family
Style	2 Storey
Status	Active

### **Community Information**

Address	52 Chelsea Way
Area	Sherwood Park
Subdivision	Chelsea Heights
City	Sherwood Park
County	ALBERTA
Province	AB
Postal Code	T8H 1E3

### **Amenities**

Amenities	Air Conditioner, Deck, Exterior Walls- 2"x6", Gazebo, Hot Tub
Parking	Double Garage Attached

### **Interior**

Interior Features	ensuite bathroom
Appliances	Air Conditioning-Central, Alarm/Security System, Dishwasher-Built-In, Dryer, Garage Control, Garage Opener, Oven-Microwave, Refrigerator, Storage Shed, Stove-Electric, Vacuum System Attachments, Washer, Window Coverings, TV Wall Mount, Hot Tub
Heating	Forced Air-1, Natural Gas
Fireplace	Yes
Fireplaces	Mantel
Stories	2
Has Basement	Yes
Basement	Full, Partially Finished

### **Exterior**

Exterior	Wood, Vinyl
----------	-------------

Exterior Features	Fenced, Landscaped, Park/Reserve
Roof	Asphalt Shingles
Construction	Wood, Vinyl
Foundation	Concrete Perimeter

### **Additional Information**

Date Listed	March 14th, 2025
-------------	------------------

Days on Market	21
----------------	----

Zoning	Zone 25
--------	---------

DATA IS DEEMED RELIABLE BUT IS NOT GUARANTEED ACCURATE BY THE REALTORS® ASSOCIATION OF EDMONTON. COPYRIGHT 2025 BY THE REALTORS® ASSOCIATION OF EDMONTON. ALL RIGHTS RESERVED. Trademarks are owned or controlled by the Canadian Real Estate Association (CREA) and identify real estate professionals who are members of CREA (REALTOR®, REALTORS®) and/or the quality of services they provide (MLS®, Multiple Listing Service®)

Listing information last updated on April 4th, 2025 at 3:02am MDT