

# \$649,900 - 2237 Blue Jay Landing Landing, Edmonton

MLS® #E4425548

**\$649,900**

5 Bedroom, 3.50 Bathroom, 2,343 sqft

Single Family on 0.00 Acres

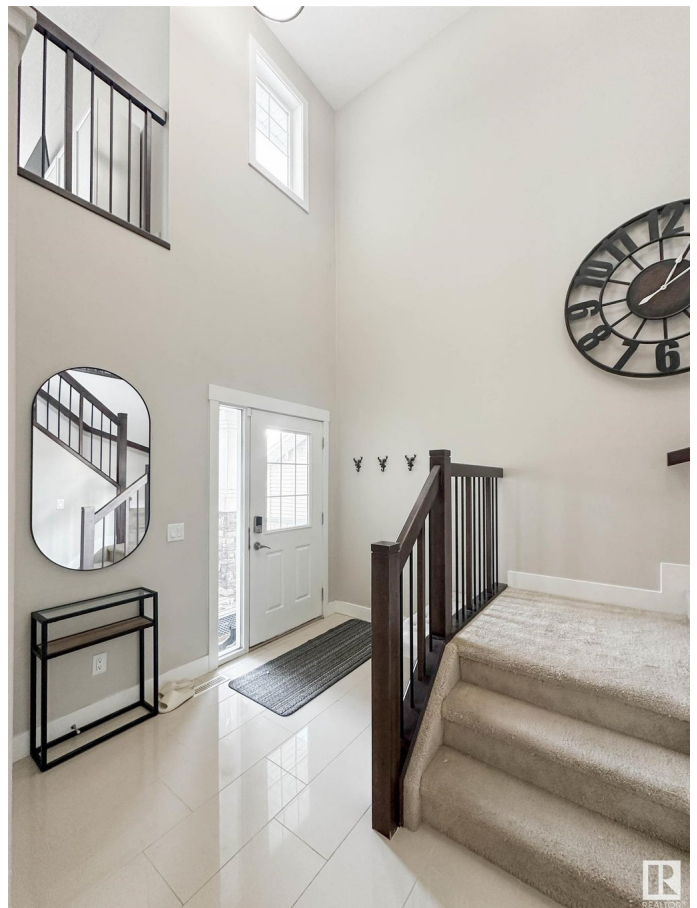
Starling, Edmonton, AB

Beautiful FULLY FINISHED two storey in the heart of Starling! Close to walking trails and access roads. Step in to grand entry way with soaring ceilings and head into the sun filled open concept living. Kitchen filled with ample storage wand walkthru pantry. Customized dining nook & stunning living room with cozy gas fireplace flanked by built in storage. Main floor den with double doors is perfect for a work from home lifestyle or playroom for kids! Upstairs ft HUGE bonus room, flex space, two large bedrooms, and 4pc bath. Primary suite is fit for a king w/ large walk-in closet & 5pc ensuite. Basement ft 9â€™™ ceilings and TWO additional bedrooms. Generous sized rec space is the perfect dual purpose. Addiontla 4pc bath finish the level. South facing yard with pergola covered deck & double attached garage make this the perfect move in ready home.

Built in 2013

## Essential Information

MLS® #	E4425548
Price	\$649,900
Bedrooms	5
Bathrooms	3.50
Full Baths	3
Half Baths	1



Square Footage	2,343
Acres	0.00
Year Built	2013
Type	Single Family
Sub-Type	Detached Single Family
Style	2 Storey
Status	Active

### **Community Information**

Address	2237 Blue Jay Landing Landing
Area	Edmonton
Subdivision	Starling
City	Edmonton
County	ALBERTA
Province	AB
Postal Code	T5S 0H8

### **Amenities**

Amenities	Ceiling 9 ft., Deck, Exterior Walls- 2"x6", See Remarks, 9 ft. Basement Ceiling
Parking	Double Garage Attached

### **Interior**

Interior Features	ensuite bathroom
Appliances	Dishwasher-Built-In, Dryer, Garage Control, Garage Opener, Microwave Hood Fan, Refrigerator, Stove-Electric, Washer, Window Coverings
Heating	Forced Air-1, Natural Gas
Fireplace	Yes
Fireplaces	Mantel, Stone Facing
Stories	2
Has Basement	Yes
Basement	Full, Finished

### **Exterior**

Exterior	Wood, Stone, Vinyl
Exterior Features	Fenced, Golf Nearby, Landscaped, Playground Nearby, Schools, Shopping Nearby, See Remarks
Roof	Asphalt Shingles
Construction	Wood, Stone, Vinyl

Foundation Concrete Perimeter

**Additional Information**

Date Listed March 13th, 2025

Days on Market 20

Zoning Zone 59



DATA IS DEEMED RELIABLE BUT IS NOT GUARANTEED ACCURATE BY THE REALTORS® ASSOCIATION OF EDMONTON. COPYRIGHT 2025 BY THE REALTORS® ASSOCIATION OF EDMONTON. ALL RIGHTS RESERVED. Trademarks are owned or controlled by the Canadian Real Estate Association (CREA) and identify real estate professionals who are members of CREA (REALTOR®, REALTORS®) and/or the quality of services they provide (MLS®, Multiple Listing Service®)

Listing information last updated on April 2nd, 2025 at 2:47am MDT