

\$349,900 - 126 Kiniski Crescent, Edmonton

MLS® #E4425248

\$349,900

3 Bedroom, 1.00 Bathroom, 1,008 sqft
Single Family on 0.00 Acres

Kiniski Gardens, Edmonton, AB

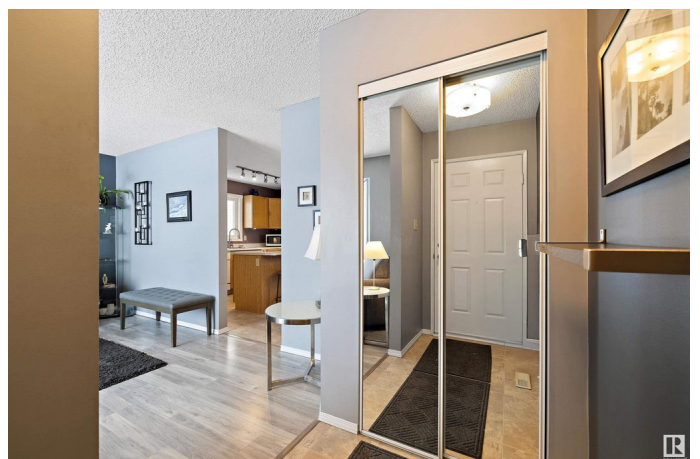
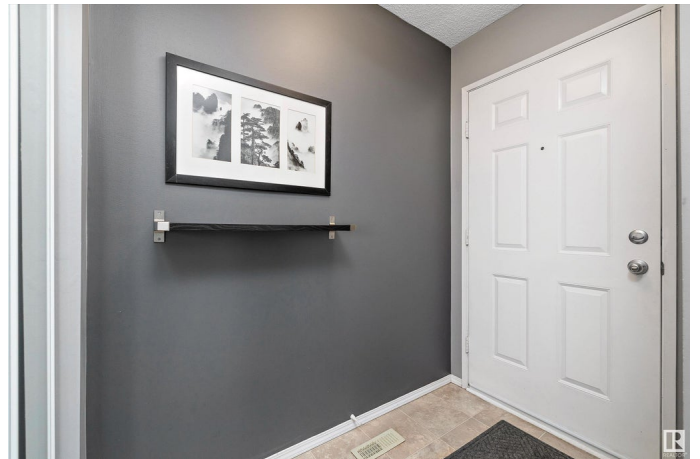
Lovingly maintained family home in the charming Southeast neighborhood of Kiniski Gardens! Perfectly situated close to schools, shopping, green spaces, the rec center, and all of life's other amenities. This 1,008 sqft home is move-in ready! The main floor features new flooring throughout the sun-drenched living room, which is adjacent to the large eat-in kitchen with tons of storage and a convenient island with seating. Step past the dining room, outside, and onto the gorgeous cedar deck, or into the large fenced backyard, complete with a double parking pad. Upstairs are three large bedrooms and a 4-piece bathroom with a new tub surround (2023 - Lifetime warranty!). The lower two levels offer unlimited storage options or future development of your choice. Enjoy maintenance-free living with these recent upgrades: 30-year shingles (2007), new windows and patio door (2025), concrete sidewalks (2022), new HWT (2023), furnace service and component upgrade (2021). Love where you live!

Built in 1988

Essential Information

MLS® # E4425248

Price \$349,900



| | |
|----------------|------------------------|
| Bedrooms | 3 |
| Bathrooms | 1.00 |
| Full Baths | 1 |
| Square Footage | 1,008 |
| Acres | 0.00 |
| Year Built | 1988 |
| Type | Single Family |
| Sub-Type | Detached Single Family |
| Style | 4 Level Split |
| Status | Active |

Community Information

| | |
|-------------|----------------------|
| Address | 126 Kiniski Crescent |
| Area | Edmonton |
| Subdivision | Kiniski Gardens |
| City | Edmonton |
| County | ALBERTA |
| Province | AB |
| Postal Code | T6L 5A9 |

Amenities

| | |
|-----------|----------------------------------|
| Amenities | Deck, Vinyl Windows, See Remarks |
| Parking | Parking Pad Cement/Paved |

Interior

| | |
|--------------|--|
| Appliances | Dishwasher-Built-In, Dryer, Refrigerator, Storage Shed, Stove-Electric, Washer |
| Heating | Forced Air-1, Natural Gas |
| Stories | 2 |
| Has Basement | Yes |
| Basement | Full, Unfinished |

Exterior

| | |
|-------------------|--|
| Exterior | Wood, Vinyl |
| Exterior Features | Back Lane, Golf Nearby, Low Maintenance Landscape, Playground Nearby, Public Swimming Pool, Public Transportation, Schools, Shopping Nearby, See Remarks |
| Roof | Asphalt Shingles |
| Construction | Wood, Vinyl |

Foundation Concrete Perimeter

Additional Information

Date Listed March 12th, 2025

Days on Market 1

Zoning Zone 29

DATA IS DEEMED RELIABLE BUT IS NOT GUARANTEED ACCURATE BY THE REALTORS® ASSOCIATION OF EDMONTON. COPYRIGHT 2025 BY THE REALTORS® ASSOCIATION OF EDMONTON. ALL RIGHTS RESERVED. Trademarks are owned or controlled by the Canadian Real Estate Association (CREA) and identify real estate professionals who are members of CREA (REALTOR®, REALTORS®) and/or the quality of services they provide (MLS®, Multiple Listing Service®)

Listing information last updated on March 13th, 2025 at 7:47am MDT