

# \$374,900 - 204 11826 100 Avenue, Edmonton

MLS® #E4424796

**\$374,900**

1 Bedroom, 1.00 Bathroom, 772 sqft  
Condo / Townhouse on 0.00 Acres

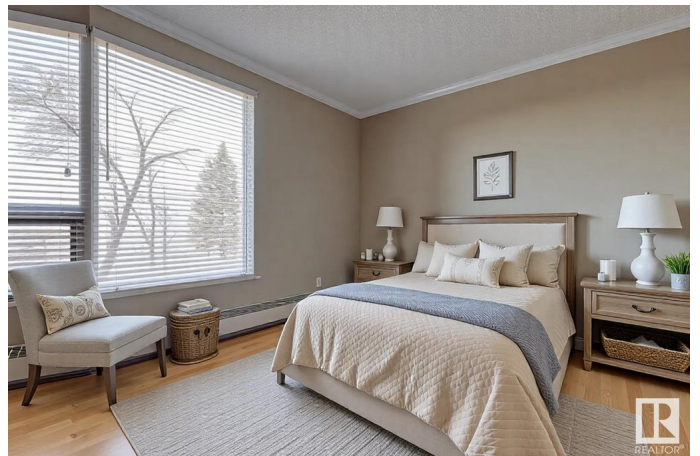
W&hkw&antwin, Edmonton, AB

Unique opportunity at a South facing 1-Bedroom suite in the exclusive Carlisle Building (only 4 exist)! The layout is spacious and open, at over 770 SQFT and features large windows that span the entire South wall, overlooking the scenic Victoria Promenade and River Valley. Favorite features of this suite include classic cherrywood finishes, natural stone countertops, a generous sized bedroom with ample closet space and convenient in-suite laundry. The Carlisle's location is perfect, with the promenade, the river valley trails, and the vibrant 124th Street right at your doorstep, as well as close proximity to the downtown core. The building is low density and offers timeless luxury which is apparent through the inviting lobby and well-kept common area. This property includes 1 underground titled parking stall and the building offers surface visitor parking.

Built in 1981

## Essential Information

MLS® #	E4424796
Price	\$374,900
Bedrooms	1
Bathrooms	1.00
Full Baths	1
Square Footage	772



Acres	0.00
Year Built	1981
Type	Condo / Townhouse
Sub-Type	Apartment High Rise
Style	Single Level Apartment
Status	Active

### **Community Information**

Address	204 11826 100 Avenue
Area	Edmonton
Subdivision	WÃ©hkwÃ©ntÃ©win
City	Edmonton
County	ALBERTA
Province	AB
Postal Code	T5K 0K3

### **Amenities**

Amenities	On Street Parking, Air Conditioner, Parking-Visitor
Parking	Parkade

### **Interior**

Appliances	Air Conditioning-Central, Dishwasher-Built-In, Dryer, Microwave Hood Fan, Refrigerator, Stove-Electric, Washer, Window Coverings, See Remarks
Heating	Baseboard, Natural Gas
# of Stories	18
Stories	1
Has Basement	Yes
Basement	None, No Basement

### **Exterior**

Exterior	Concrete, Stucco
Exterior Features	Back Lane, Corner Lot, Landscaped, Low Maintenance Landscape, Playground Nearby, Public Transportation, Ravine View, River Valley View, River View, Schools, Shopping Nearby, See Remarks, Private Park Access
Roof	Tar & Gravel
Construction	Concrete, Stucco
Foundation	Concrete Perimeter

## Additional Information

Date Listed	March 8th, 2025
Days on Market	26
Zoning	Zone 12
Condo Fee	\$695

DATA IS DEEMED RELIABLE BUT IS NOT GUARANTEED ACCURATE BY THE REALTORS® ASSOCIATION OF EDMONTON. COPYRIGHT 2025 BY THE REALTORS® ASSOCIATION OF EDMONTON. ALL RIGHTS RESERVED. Trademarks are owned or controlled by the Canadian Real Estate Association (CREA) and identify real estate professionals who are members of CREA (REALTOR®, REALTORS®) and/or the quality of services they provide (MLS®, Multiple Listing Service®)

Listing information last updated on April 3rd, 2025 at 2:17am MDT