

\$689,900 - 5806 Peltier Close, Beaumont

MLS® #E4424757

\$689,900

5 Bedroom, 3.00 Bathroom, 2,437 sqft

Single Family on 0.00 Acres

Place Chaleureuse, Beaumont, AB

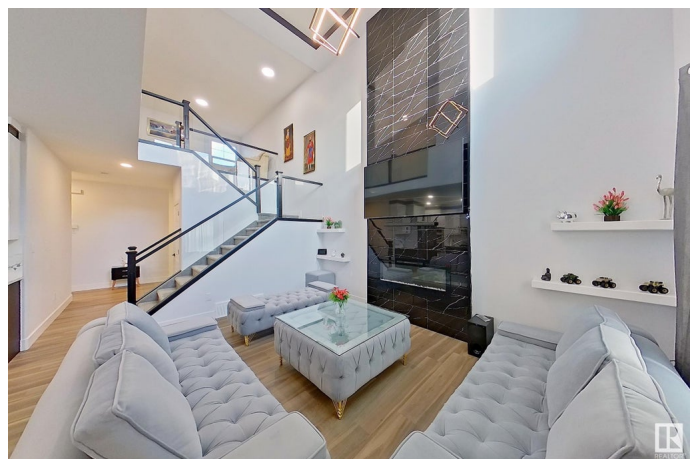
This stunning two-story, 5-bedroom home offers an elegant blend of comfort, functionality, and modern features. Situated on a regular lot of 2437 sq. ft., it includes a front double-car garage and is perfect for family living. Step inside to a spacious open-to-below living area that enhances the airy feel of the home. The main floor features a convenient bedroom and full bath, making it ideal for guests or multi-generational living. The cozy fireplace in the living room adds warmth and ambiance. The modern kitchen is a chef's dream, with stainless steel appliances, including a built-in microwave and oven, as well as a separate spice kitchen for added convenience. The property is beautifully landscaped, with fencing that offers both privacy and enhanced curb appeal. It's also located close to a school, making it an excellent choice for families with children. For added versatility, the home includes a separate entrance to the basement, offering potential for extra living space or rental income.

Built in 2023

Essential Information

MLS® # E4424757

Price \$689,900



Bedrooms	5
Bathrooms	3.00
Full Baths	3
Square Footage	2,437
Acres	0.00
Year Built	2023
Type	Single Family
Sub-Type	Detached Single Family
Style	2 Storey
Status	Active

Community Information

Address	5806 Peltier Close
Area	Beaumont
Subdivision	Place Chaleureuse
City	Beaumont
County	ALBERTA
Province	AB
Postal Code	T4X 2Z1

Amenities

Amenities	Carbon Monoxide Detectors, Ceiling 9 ft., Detectors Smoke, Hot Water Natural Gas, No Animal Home, HRV System
Parking	Double Garage Attached, Front Drive Access

Interior

Interior Features	ensuite bathroom
Appliances	Dishwasher - Energy Star, Dryer, Hood Fan, Oven-Built-In, Oven-Microwave, Refrigerator, Stove-Gas
Heating	Forced Air-1, Natural Gas
Stories	2
Has Basement	Yes
Basement	Full, Unfinished

Exterior

Exterior	Wood, Asphalt, Stone, Vinyl
Exterior Features	Airport Nearby, Fenced, Landscaped, Playground Nearby, Public Swimming Pool, Public Transportation, Schools, Shopping Nearby
Roof	Asphalt Shingles

Construction	Wood, Asphalt, Stone, Vinyl
Foundation	Concrete Perimeter

Additional Information

Date Listed	March 8th, 2025
Days on Market	42
Zoning	Zone 82

DATA IS DEEMED RELIABLE BUT IS NOT GUARANTEED ACCURATE BY THE REALTORS® ASSOCIATION OF EDMONTON. COPYRIGHT 2025 BY THE REALTORS® ASSOCIATION OF EDMONTON. ALL RIGHTS RESERVED.Trademarks are owned or controlled by the Canadian Real Estate Association (CREA) and identify real estate professionals who are members of CREA (REALTOR®, REALTORS®) and/or the quality of services they provide (MLS®, Multiple Listing Service®)

Listing information last updated on April 19th, 2025 at 3:17pm MDT