

# \$759,900 - 6209 19 St, Rural Leduc County

MLS® #E4424735

**\$759,900**

6 Bedroom, 4.00 Bathroom, 2,736 sqft

Rural on 0.14 Acres

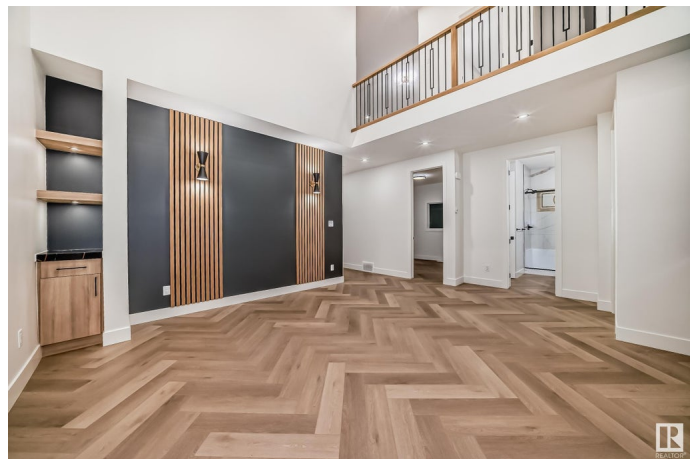
Irvin Creek, Rural Leduc County, AB

This spacious home features 5 bedrooms, 4 bathrooms, 2 living rooms, 2 kitchens, and 1 dining room—an ideal setting for your growing family. The home's unique design and high-end finishes will impress you at every turn. With numerous upgrades throughout. Premium kitchen cabinetry with elegant quartz countertops, complemented by a spacious spice kitchen featuring a gas stove. Upon entering through the front door, you're welcomed into a bright living room with soaring ceilings that open to above. For added convenience, a full bedroom and bathroom are located on the main floor.

Built in 2024

## Essential Information

MLS® #	E4424735
Price	\$759,900
Bedrooms	6
Bathrooms	4.00
Full Baths	4
Square Footage	2,736
Acres	0.14
Year Built	2024
Type	Rural
Sub-Type	Detached Single Family
Style	2 Storey



Status Active

### Community Information

Address 6209 19 St  
Area Rural Leduc County  
Subdivision Irvin Creek  
City Rural Leduc County  
County ALBERTA  
Province AB  
Postal Code T4X 3C8

### Amenities

Features Carbon Monoxide Detectors, Ceiling 9 ft., Closet Organizers, Detectors Smoke, No Animal Home, No Smoking Home, Television Connection, Vaulted Ceiling, Natural Gas BBQ Hookup, Natural Gas Stove Hookup, 9 ft. Basement Ceiling

### Interior

Interior Features ensuite bathroom  
Heating Forced Air-1, Natural Gas  
Fireplace Yes  
Stories 2  
Has Basement Yes  
Basement Full, Unfinished

### Exterior

Exterior Wood  
Exterior Features Airport Nearby, Flat Site, Golf Nearby, Level Land, No Back Lane, Not Fenced, Not Landscaped, Playground Nearby, Shopping Nearby  
Construction Wood  
Foundation Concrete Perimeter

### Additional Information

Date Listed March 7th, 2025  
Days on Market 27  
Zoning Zone 80

DATA IS DEEMED RELIABLE BUT IS NOT GUARANTEED ACCURATE BY THE REALTORS® ASSOCIATION OF EDMONTON. COPYRIGHT 2025 BY THE REALTORS® ASSOCIATION OF EDMONTON. ALL RIGHTS RESERVED. Trademarks are owned or controlled by the Canadian Real Estate Association (CREA) and identify real estate professionals who are members of CREA (REALTOR®, REALTORS®) and/or the quality of services they provide (MLS®, Multiple Listing Service®).

Listing information last updated on April 3rd, 2025 at 1:32am MDT