

## \$695,000 - 1024 Hope Road, Edmonton

MLS® #E4424629

**\$695,000**

5 Bedroom, 3.50 Bathroom, 2,220 sqft  
Single Family on 0.00 Acres

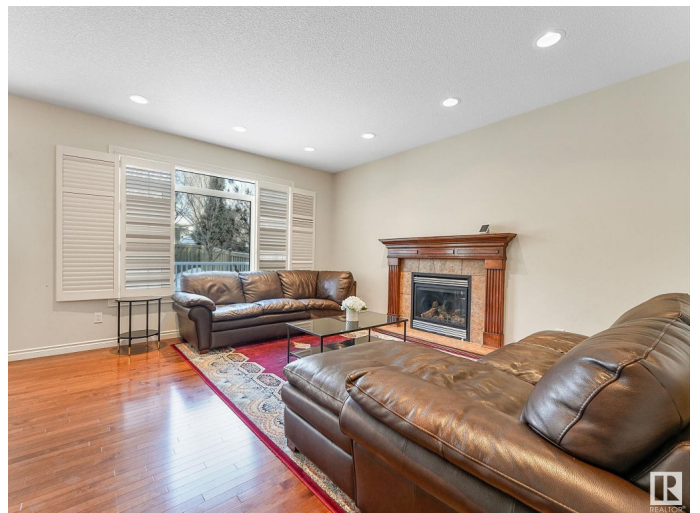
The Hamptons, Edmonton, AB

Live in the exclusive sought after neighborhood of Copperwood in Hamptons. This home is MOVE IN READY. Completely upgraded from top to bottom including a finished basement w/bd & an addn'l 3 bd up & 4th bedroom or as bonus room. Bright & airy w/ a MAIN FLOOR office area/den/flex room! NO CARPET IN THE HOME - hardwood & tile throughout main & upper floors & upgraded cork flooring in basement. Home has a gourmet kitchen & custom shutters throughout. There is central A/C for hot summer days. Main floor has open living area w/ gas fireplace overlooking backyard, dining & kitchen area. Large dining nook to fit your family. Kitchen has upgraded STAINLESS STEEL appliances w/ a gas stove & a walk through pantry! Large main floor laundry room. All bedrooms are spacious including a large primary w/ Spa like ensuite DOUBLE sinks, tiled shower & CORNER jetted soaker tub. Private landscaped yard with mature trees, composite deck & concrete pad. Schools, natural trails, lakes & playgrounds w/n walking distance.

Built in 2005

### Essential Information

MLS® #	E4424629
Price	\$695,000



Bedrooms	5
Bathrooms	3.50
Full Baths	3
Half Baths	1
Square Footage	2,220
Acres	0.00
Year Built	2005
Type	Single Family
Sub-Type	Detached Single Family
Style	2 Storey
Status	Active

### **Community Information**

Address	1024 Hope Road
Area	Edmonton
Subdivision	The Hamptons
City	Edmonton
County	ALBERTA
Province	AB
Postal Code	T6M 3A1

### **Amenities**

Amenities	Air Conditioner, Natural Gas BBQ Hookup
Parking	Double Garage Attached

### **Interior**

Interior Features	ensuite bathroom
Appliances	Air Conditioning-Central, Dishwasher-Built-In, Dryer, Hood Fan, Refrigerator, Stove-Gas, Washer, Window Coverings
Heating	Forced Air-1, Natural Gas
Fireplace	Yes
Fireplaces	Mantel, Tile Surround
Stories	3
Has Basement	Yes
Basement	Full, Finished

### **Exterior**

Exterior	Wood, Stone, Vinyl
Exterior Features	Fenced, Landscaped, Park/Reserve, Playground Nearby, Public

Transportation, Schools, Shopping Nearby

Roof Asphalt Shingles  
Construction Wood, Stone, Vinyl  
Foundation Concrete Perimeter

### **School Information**

Elementary Bessie Nichols School  
Middle Kim Hung School  
High Jasper Place School

### **Additional Information**

Date Listed March 7th, 2025  
Days on Market 26  
Zoning Zone 58

DATA IS DEEMED RELIABLE BUT IS NOT GUARANTEED ACCURATE BY THE REALTORS® ASSOCIATION OF EDMONTON. COPYRIGHT 2025 BY THE REALTORS® ASSOCIATION OF EDMONTON. ALL RIGHTS RESERVED. Trademarks are owned or controlled by the Canadian Real Estate Association (CREA) and identify real estate professionals who are members of CREA (REALTOR®, REALTORS®) and/or the quality of services they provide (MLS®, Multiple Listing Service®)

Listing information last updated on April 2nd, 2025 at 3:17am MDT