

# \$1,985,000 - 26409 Twp Rd 532a, Rural Parkland County

MLS® #E4423333

**\$1,985,000**

6 Bedroom, 6.50 Bathroom, 4,324 sqft

Rural on 1.00 Acres

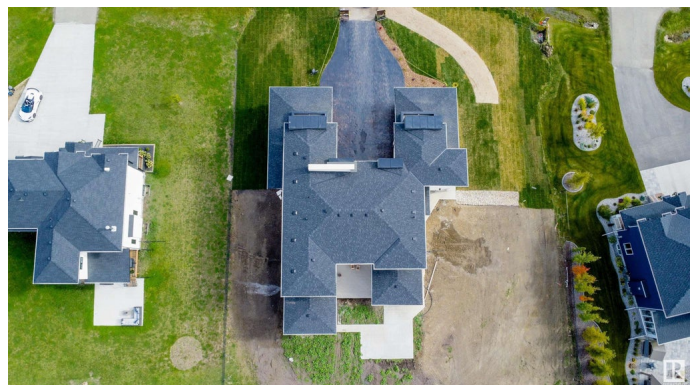
Spring Meadow Estates, Rural Parkland County, AB

ASR Projects Best ! Nearing Completion, 1 Year Labour of Love Must View !! Stunning Turn Key Luxury Spectacular Modern 6000 + sq ft of Prime Living area wi 6 car plus 2 att oversized triple garages. Hundreds of Thousands of Dollars Spent on Ultimate Living Built ins, California Wardrobe Closets Throughout, 68 inch fridge, Highest Tech Night Lighting, Expoy Floor, Wall Mounted Washrms, Dream Kitchen w Extra Spice Kit, Gorgeous Entrance, 1 acre city water, sewer, 8 minutes paved road to WEM. Main flr office bedroom w 4 piece ensuite, sunroom, great room, mudroom, etc., 6 bedrms, 7 washrms total. Up 4 bedrms - 4 ensuites, loft, laundry, balcony areas, covered decks add magic to fabulous floor plan ! 4300 sq ft above ground incl approx 380 sq ft of sun room ( possible heating options influence price), 1763 sq ft lower. Separate Entrance Stairs Enter to fully dev lower for privacy ... Lower lev has Theatre Room, Gym, Rec Room with bar, 6th bdrm, two 4 piece washrooms, landscape incl as is - Quick Possession

Built in 2024

## Essential Information

MLS® #	E4423333
Price	\$1,985,000



Bedrooms	6
Bathrooms	6.50
Full Baths	6
Half Baths	1
Square Footage	4,324
Acres	1.00
Year Built	2024
Type	Rural
Sub-Type	Detached Single Family
Style	2 Storey
Status	Active

### **Community Information**

Address	26409 Twp Rd 532a
Area	Rural Parkland County
Subdivision	Spring Meadow Estates
City	Rural Parkland County
County	ALBERTA
Province	AB
Postal Code	T7X 4M1

### **Amenities**

Features	Carbon Monoxide Detectors, Ceiling 10 ft., Ceiling 9 ft., Exterior Walls-2"x6", No Animal Home, No Smoking Home, Sprinkler Sys-Underground, Vaulted Ceiling, See Remarks
Parking Spaces	10

### **Interior**

Interior Features	ensuite bathroom
Heating	Forced Air-2, Natural Gas
Fireplace	Yes
Stories	3
Has Basement	Yes
Basement	Full, Finished

### **Exterior**

Exterior	Wood
Exterior Features	Environmental Reserve, Golf Nearby, No Back Lane, No Through Road, Park/Reserve, Partially Landscaped, Rolling Land, See Remarks

Construction Wood  
Foundation Concrete Perimeter

### **Additional Information**

Date Listed February 28th, 2025  
Days on Market 34  
Zoning Zone 70

DATA IS DEEMED RELIABLE BUT IS NOT GUARANTEED ACCURATE BY THE REALTORS® ASSOCIATION OF EDMONTON. COPYRIGHT 2025 BY THE REALTORS® ASSOCIATION OF EDMONTON. ALL RIGHTS RESERVED. Trademarks are owned or controlled by the Canadian Real Estate Association (CREA) and identify real estate professionals who are members of CREA (REALTOR®, REALTORS®) and/or the quality of services they provide (MLS®, Multiple Listing Service®)

Listing information last updated on April 3rd, 2025 at 1:47am MDT