

Courtesy Of Rejo Mathew Of MaxWell Progressive

\$484,900 - 16104 100 Street, Edmonton

MLS® #E4423264

\$484,900

3 Bedroom, 2.50 Bathroom, 1,549 sqft

Single Family on 0.00 Acres

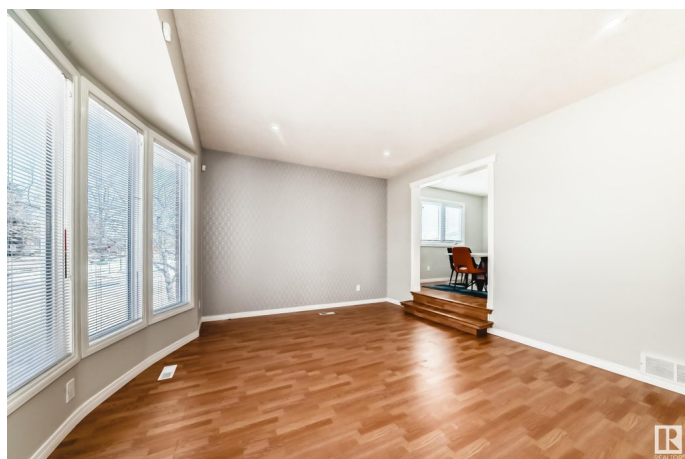
Lorelei, Edmonton, AB

Welcome to Lorelei ! This fabulous, renovated bungalow offers over 2500 sqft living area. The main floor features a large formal living room, dining area, renovated kitchen with all high end appliances, family room with a cozy wood burning fire place, spacious primary bedroom with 3 pc ensuite, two other bedrooms, common bath and laundry area. The lower level has a living room, office area which could easily be converted to a bedroom and a large rec area, bar, bonus room and a half bath. There are plenty of storage space as well in the basement. Recent upgrades include 22x24 garage with 220V line (faster charge for EVs) and gas connection for future heater, all appliances, wall papers, paint and many more. The fully fenced and landscaped private backyard has a covered patio, gazebo and ideal to enjoy the summer evenings. This gorgeous home is conveniently located to public transportation, schools, shopping and Anthony Henday. IMMEDIATE POSSESSION AVAILABLE

Built in 1979

Essential Information

| | |
|----------|-----------|
| MLS® # | E4423264 |
| Price | \$484,900 |
| Bedrooms | 3 |



| | |
|----------------|------------------------|
| Bathrooms | 2.50 |
| Full Baths | 2 |
| Half Baths | 1 |
| Square Footage | 1,549 |
| Acres | 0.00 |
| Year Built | 1979 |
| Type | Single Family |
| Sub-Type | Detached Single Family |
| Style | Bungalow |
| Status | Active |

Community Information

| | |
|-------------|------------------|
| Address | 16104 100 Street |
| Area | Edmonton |
| Subdivision | Lorelei |
| City | Edmonton |
| County | ALBERTA |
| Province | AB |
| Postal Code | T5X 4R7 |

Amenities

| | |
|-----------|--|
| Amenities | Detectors Smoke, No Animal Home, No Smoking Home |
| Parking | Double Garage Detached |

Interior

| | |
|-------------------|---|
| Interior Features | ensuite bathroom |
| Appliances | Dishwasher-Built-In, Dryer, Garage Opener, Stove-Gas, Washer, Window Coverings, Refrigerators-Two |
| Heating | Forced Air-1, Natural Gas |
| Fireplace | Yes |
| Fireplaces | Brick Facing |
| Stories | 2 |
| Has Basement | Yes |
| Basement | Full, Finished |

Exterior

| | |
|-------------------|--|
| Exterior | Wood, Brick, Vinyl |
| Exterior Features | Corner Lot, Fenced, Landscaped, Playground Nearby, Public Transportation, Schools, Shopping Nearby |

| | |
|--------------|--------------------|
| Roof | Asphalt Shingles |
| Construction | Wood, Brick, Vinyl |
| Foundation | Concrete Perimeter |

School Information

| | |
|------------|---------------------------|
| Elementary | Lorelei School |
| Middle | Mary Butterworth Jr. High |
| High | Mary Butterworth Jr. High |

Additional Information

| | |
|----------------|---------------------|
| Date Listed | February 28th, 2025 |
| Days on Market | 34 |
| Zoning | Zone 27 |

DATA IS DEEMED RELIABLE BUT IS NOT GUARANTEED ACCURATE BY THE REALTORS® ASSOCIATION OF EDMONTON. COPYRIGHT 2025 BY THE REALTORS® ASSOCIATION OF EDMONTON. ALL RIGHTS RESERVED. Trademarks are owned or controlled by the Canadian Real Estate Association (CREA) and identify real estate professionals who are members of CREA (REALTOR®, REALTORS®) and/or the quality of services they provide (MLS®, Multiple Listing Service®)

Listing information last updated on April 3rd, 2025 at 5:17am MDT