

# \$104,997 - 405 1620 48 Street, Edmonton

MLS® #E4422537

**\$104,997**

1 Bedroom, 1.00 Bathroom, 622 sqft  
Condo / Townhouse on 0.00 Acres

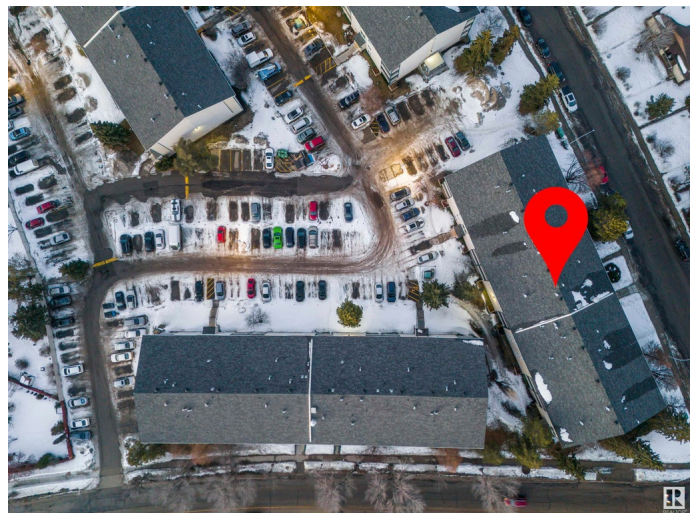
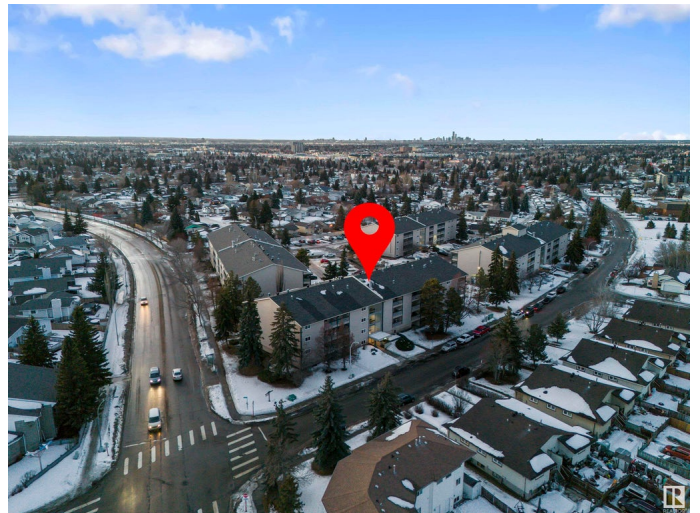
Pollard Meadows, Edmonton, AB

Welcome to Millwoods Terrace! This bright and spacious top Floor unit in Pollard Meadows is perfect for first-time buyers or investors. Featuring a functional layout with ample natural light, a well-appointed kitchen, and a cozy living area leading to a private balcony and with Laundry next door, this home offers both comfort and convenience. Located steps away from schools, parks, shopping, and public transit, you'll enjoy all the perks of urban living in a quiet, family-friendly neighborhood. Don't miss this affordable opportunity to own in a fantastic community.

Built in 1981

## Essential Information

|                |                        |
|----------------|------------------------|
| MLS® #         | E4422537               |
| Price          | \$104,997              |
| Bedrooms       | 1                      |
| Bathrooms      | 1.00                   |
| Full Baths     | 1                      |
| Square Footage | 622                    |
| Acres          | 0.00                   |
| Year Built     | 1981                   |
| Type           | Condo / Townhouse      |
| Sub-Type       | Lowrise Apartment      |
| Style          | Single Level Apartment |
| Status         | Active                 |



## Community Information

|             |                    |
|-------------|--------------------|
| Address     | 405 1620 48 Street |
| Area        | Edmonton           |
| Subdivision | Pollard Meadows    |
| City        | Edmonton           |
| County      | ALBERTA            |
| Province    | AB                 |
| Postal Code | T6L 5P1            |

## Amenities

|           |  |
|-----------|--|
| Amenities | Hot Water Instant, Parking-Visitor, Patio, See Remarks |
| Parking   | Stall  |

## Interior

|              |   |
|--------------|---|
| Appliances   | Dishwasher-Built-In, Hood Fan, Refrigerator, Stove-Electric |
| Heating      | Forced Air-1, Natural Gas                                   |
| # of Stories | 4   |
| Stories      | 1   |
| Has Basement | Yes   |
| Basement     | None, No Basement   |

## Exterior

|                   |   |
|-------------------|---|
| Exterior          | Wood, Vinyl                                       |
| Exterior Features | Playground Nearby, Public Transportation, Schools |
| Roof              | Asphalt Shingles                                  |
| Construction      | Wood, Vinyl                                       |
| Foundation        | Concrete Perimeter                                |

## Additional Information

|                |                     |
|----------------|---------------------|
| Date Listed    | February 22nd, 2025 |
| Days on Market | 39                  |
| Zoning         | Zone 29             |
| Condo Fee      | \$351               |

DATA IS DEEMED RELIABLE BUT IS NOT GUARANTEED ACCURATE BY THE REALTORS® ASSOCIATION OF EDMONTON. COPYRIGHT 2025 BY THE REALTORS® ASSOCIATION OF EDMONTON. ALL RIGHTS RESERVED. Trademarks are owned or controlled by the Canadian Real Estate Association (CREA) and identify real estate professionals who are members of CREA (REALTOR®, REALTORS®) and/or the quality of services they provide (MLS®, Multiple Listing Service®)

Listing information last updated on April 2nd, 2025 at 12:47pm MDT