

Courtesy Of Leanne Cunningham Of Liv Real Estate

\$199,900 - 138 1008 Rosenthal Boulevard, Edmonton

MLS® #E4421397

\$199,900

1 Bedroom, 1.00 Bathroom, 601 sqft
Condo / Townhouse on 0.00 Acres

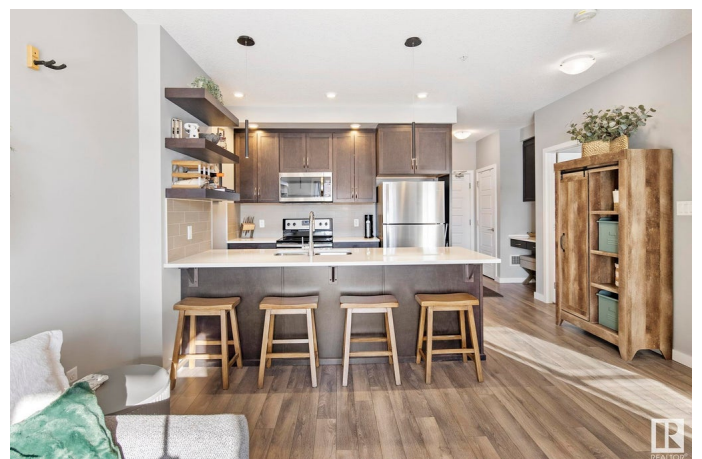
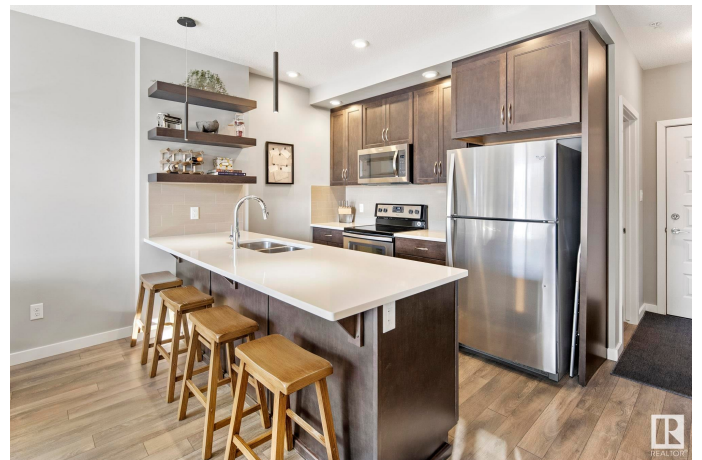
Rosenthal (Edmonton), Edmonton, AB

This modern 1-bedroom, 1-bathroom gem at Jade Condominium combines style and comfort. With a bright, open-concept layout, sleek finishes, laminate and tile flooring, and ground-floor convenience, this 600 sq.ft space is perfect for relaxing or entertaining. The kitchen features ceiling-height maple cabinets, stainless steel appliances, quartz countertops, and an 8ft island. The east-facing patio includes a gas line for easy grilling without the hassle of propane tanks. Wake up to the morning sun through your east-facing bedroom window. The condo also includes in-suite laundry and ample storage. Jade Condos also offers fantastic amenities like a fitness center, secure entry, underground parking, a rec room, and private suite rentals. Youâ€™ll also have titled parking in the heated underground lot with a storage cage at your stall. Located in the west end, itâ€™s minutes from shopping, grocery stores, and easy access to Stony Plain Road, the Whitemud, and Costco!

Built in 2017

Essential Information

MLS® #	E4421397
Price	\$199,900
Bedrooms	1
Bathrooms	1.00



Full Baths	1
Square Footage	601
Acres	0.00
Year Built	2017
Type	Condo / Townhouse
Sub-Type	Lowrise Apartment
Style	Single Level Apartment
Status	Active

Community Information

Address	138 1008 Rosenthal Boulevard
Area	Edmonton
Subdivision	Rosenthal (Edmonton)
City	Edmonton
County	ALBERTA
Province	AB
Postal Code	T5T 7J4

Amenities

Amenities	Exercise Room, Guest Suite, No Animal Home, No Smoking Home, Parking-Visitor, Patio, Recreation Room/Centre, Social Rooms, Storage Cage, Natural Gas BBQ Hookup
Parking Spaces	1
Parking	Heated, Stall, Underground

Interior

Appliances	Dishwasher-Built-In, Dryer, Microwave Hood Fan, Refrigerator, Stove-Electric, Washer
Heating	Baseboard, Natural Gas
# of Stories	4
Stories	4
Has Basement	Yes
Basement	None, No Basement

Exterior

Exterior	Wood, Metal, Vinyl, Stucco
Exterior Features	Playground Nearby, Public Transportation, Schools, Shopping Nearby
Roof	SBS Roofing System
Construction	Wood, Metal, Vinyl, Stucco

Foundation Concrete Perimeter

School Information

Elementary St Justin School K-6
Middle Michael Phair School
High Jasper Place High School

Additional Information

Date Listed February 13th, 2025
Days on Market 48
Zoning Zone 58
HOA Fees 115.5
HOA Fees Freq. Annually
Condo Fee \$314

DATA IS DEEMED RELIABLE BUT IS NOT GUARANTEED ACCURATE BY THE REALTORS® ASSOCIATION OF EDMONTON. COPYRIGHT 2025 BY THE REALTORS® ASSOCIATION OF EDMONTON. ALL RIGHTS RESERVED. Trademarks are owned or controlled by the Canadian Real Estate Association (CREA) and identify real estate professionals who are members of CREA (REALTOR®, REALTORS®) and/or the quality of services they provide (MLS®, Multiple Listing Service®)

Listing information last updated on April 2nd, 2025 at 4:02am MDT