

\$289,900 - 306 9927 79 Avenue, Edmonton

MLS® #E4420852

\$289,900

2 Bedroom, 2.00 Bathroom, 941 sqft
Condo / Townhouse on 0.00 Acres

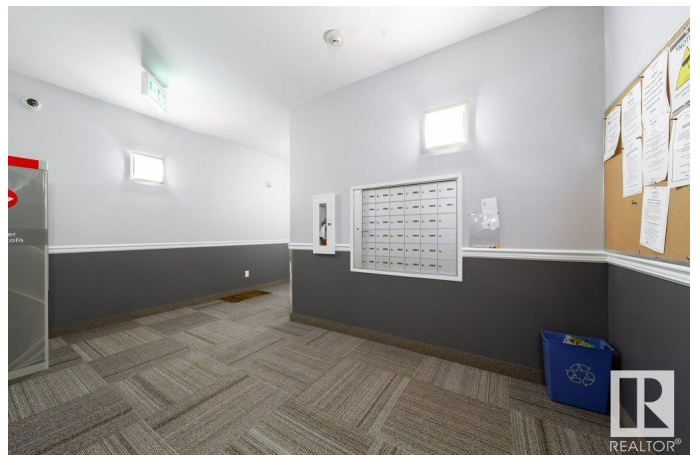
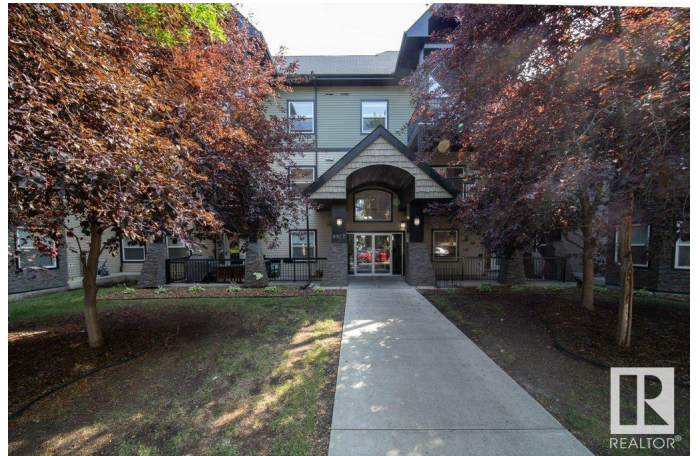
Ritchie, Edmonton, AB

Amazing top floor unit with 2 good sized bedrooms, 2 full bathroom in Solstice Off Whyte. This home comes with TWO TITLED PARKING STALLS. Located in ever popular Ritchie with easy access to shopping, restaurants and all amenities on Whyte Ave and Downtown. Situated on a quiet tree lined street with ample parking for visitors. As you walk in to the apartment you are met by a fabulous open concept space with High Vaulted Ceiling, Floor to Ceiling Windows and Patio Door which lets in an abundance of natural light. Big functional kitchen with quartz countertops, lots of cupboard space, breakfast bar and eating area. Living room opens out to private south facing balcony with gas BBQ hookup. The large primary bedroom opens to massive walk through closet and full ensuite bathroom. In suite laundry is also included. The large Indoor parking stall is located right next to door with oversize storage cage. Second stall located at back of building . Immediate possession possible, so you can be in for spring!

Built in 2007

Essential Information

MLS® #	E4420852
Price	\$289,900



Bedrooms	2
Bathrooms	2.00
Full Baths	2
Square Footage	941
Acres	0.00
Year Built	2007
Type	Condo / Townhouse
Sub-Type	Lowrise Apartment
Style	Single Level Apartment
Status	Active

Community Information

Address	306 9927 79 Avenue
Area	Edmonton
Subdivision	Ritchie
City	Edmonton
County	ALBERTA
Province	AB
Postal Code	T6E 1R3

Amenities

Amenities	Ceiling 10 ft., Closet Organizers, Detectors Smoke, No Animal Home, No Smoking Home, Secured Parking, Security Door, Vaulted Ceiling, See Remarks, Storage Cage
Parking Spaces	2
Parking	Heated, Parkade, Stall, See Remarks

Interior

Interior Features	ensuite bathroom
Appliances	Dishwasher-Built-In, Dryer, Microwave Hood Fan, Refrigerator, Stove-Electric, Washer
Heating	Hot Water, Natural Gas
# of Stories	3
Stories	1
Has Basement	Yes
Basement	None, No Basement

Exterior

Exterior	Wood, Stone, Vinyl
----------	--------------------

Exterior Features	Low Maintenance Landscape, Shopping Nearby
Roof	Asphalt Shingles
Construction	Wood, Stone, Vinyl
Foundation	Concrete Perimeter

Additional Information

Date Listed	February 8th, 2025
Days on Market	54
Zoning	Zone 17
Condo Fee	\$532

DATA IS DEEMED RELIABLE BUT IS NOT GUARANTEED ACCURATE BY THE REALTORS® ASSOCIATION OF EDMONTON. COPYRIGHT 2025 BY THE REALTORS® ASSOCIATION OF EDMONTON. ALL RIGHTS RESERVED. Trademarks are owned or controlled by the Canadian Real Estate Association (CREA) and identify real estate professionals who are members of CREA (REALTOR®, REALTORS®) and/or the quality of services they provide (MLS®, Multiple Listing Service®)

Listing information last updated on April 3rd, 2025 at 9:47am MDT