

Courtesy Of Don McKay Of Royal LePage Prestige Realty

\$1,349,900 - 385 52422 Rge Road 224, Rural Strathcona County

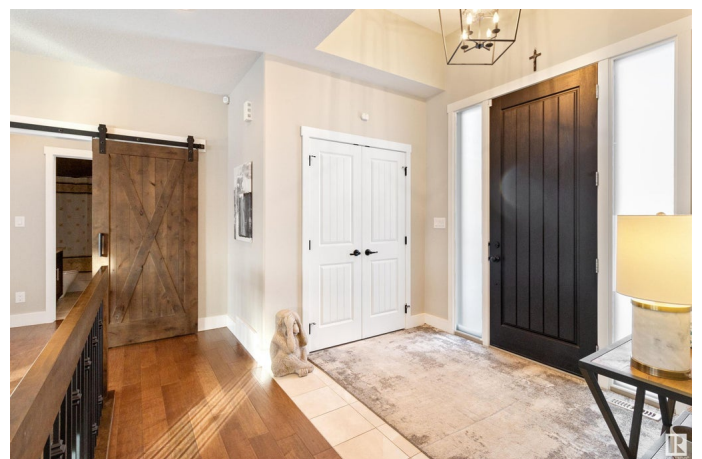
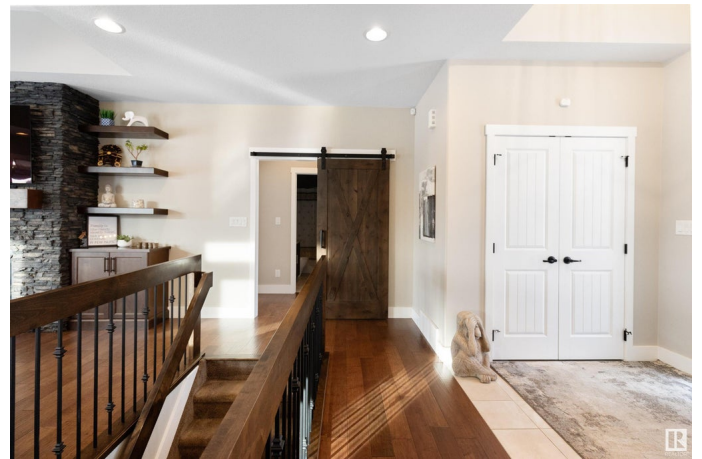
MLS® #E4418639

\$1,349,900

5 Bedroom, 3.00 Bathroom, 1,852 sqft
Rural on 2.00 Acres

Boag Lake Estates, Rural Strathcona County,
AB

Nestled on 2 acres in the prestigious Boag Lake area, this custom-built bungalow is a masterpiece of style and comfort. Boasting an open floor plan with tile and hardwood flooring, the home features a stunning gourmet kitchen with granite counters, a large island, stainless steel appliances, and ceiling-height cabinetry. The bright great room, with its gas fireplace and expansive windows, offers a warm and inviting space. The spacious master suite includes a luxurious ensuite with a large shower and a walk-in closet, while a second bedroom and main floor laundry add to the convenience. The fully finished basement impresses with a family room, wet bar, workout area, and three additional bedrooms, all with walk-in closets. Step outside to enjoy the large covered deck, fenced and landscaped yard, and heated triple garage. Located in a cul-de-sac just 2 miles from town, this home offers city-style services and high-speed internet.



Built in 2016

Essential Information

MLS® #	E4418639
Price	\$1,349,900

Bedrooms	5
Bathrooms	3.00
Full Baths	3
Square Footage	1,852
Acres	2.00
Year Built	2016
Type	Rural
Sub-Type	Detached Single Family
Style	Bungalow
Status	Active

Community Information

Address	385 52422 Rge Road 224
Area	Rural Strathcona County
Subdivision	Boag Lake Estates
City	Rural Strathcona County
County	ALBERTA
Province	AB
Postal Code	T8A 6N1

Amenities

Features	Air Conditioner, Deck
Parking Spaces	10

Interior

Interior Features	ensuite bathroom
Heating	Forced Air-2, Natural Gas
Stories	2
Has Basement	Yes
Basement	Full, Finished

Exterior

Exterior	Wood
Exterior Features	Cul-De-Sac, Fenced, Landscaped
Construction	Wood
Foundation	Concrete Perimeter

Additional Information

Date Listed	January 20th, 2025
-------------	--------------------

Days on Market 82

Zoning Zone 80

DATA IS DEEMED RELIABLE BUT IS NOT GUARANTEED ACCURATE BY THE REALTORS® ASSOCIATION OF EDMONTON. COPYRIGHT 2025 BY THE REALTORS® ASSOCIATION OF EDMONTON. ALL RIGHTS RESERVED. Trademarks are owned or controlled by the Canadian Real Estate Association (CREA) and identify real estate professionals who are members of CREA (REALTOR®, REALTORS®) and/or the quality of services they provide (MLS®, Multiple Listing Service®)

Listing information last updated on April 12th, 2025 at 8:47am MDT