

## \$558,000 - 58 929 Picard Drive, Edmonton

MLS® #E4414224

**\$558,000**

2 Bedroom, 3.00 Bathroom, 1,439 sqft  
Condo / Townhouse on 0.00 Acres

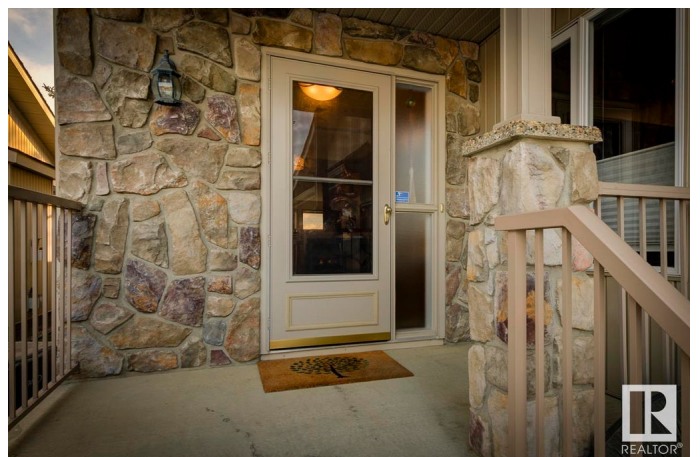
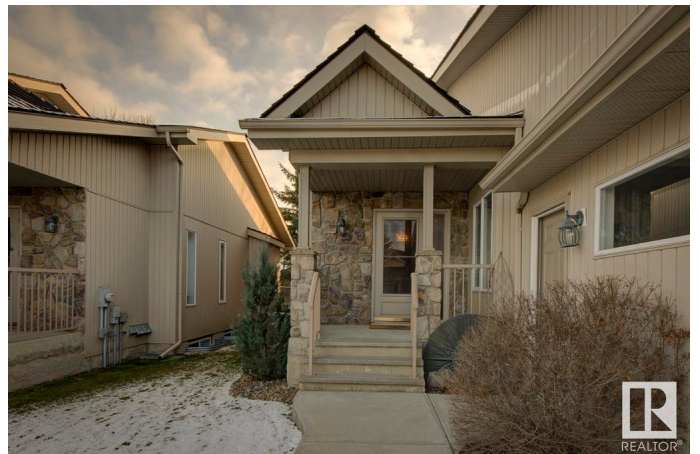
Potter Greens, Edmonton, AB

Welcome to this stunning 45+ half duplex 2 bedroom 3 bathroom bungalow in Potter Greens. With a vaulted ceiling, open, airy layout and an abundance of natural light, this home is designed for comfortable and refined living. The spacious formal living and dining rooms are perfect for entertaining, while the custom kitchen with island and double oven is the perfect baker's workshop. The large primary suite is a true retreat with a walk-in closet, 4-piece ensuite, and large windows. A main floor den with French doors and a 3-piece bath nearby add versatility. The south-facing deck is perfect for your BBQ and offers views of year round greenery and mature trees. The professionally finished basement is ideal for hosting guests or more laid back gatherings, with 9' ceilings, rec room, a large bedroom with walk-in closet, adjacent 4-piece bath, office, and ample storage. Other highlights include central air, main floor laundry, double attached garage, hardwood floors, and a gas fireplace on every level.

Built in 2000

### Essential Information

MLS® #	E4414224
Price	\$558,000



Bedrooms	2
Bathrooms	3.00
Full Baths	3
Square Footage	1,439
Acres	0.00
Year Built	2000
Type	Condo / Townhouse
Sub-Type	Half Duplex
Style	Bungalow
Status	Active

### Community Information

Address	58 929 Picard Drive
Area	Edmonton
Subdivision	Potter Greens
City	Edmonton
County	ALBERTA
Province	AB
Postal Code	T5T 6J7

### Amenities

Amenities	Air Conditioner, Deck, No Animal Home, No Smoking Home
Parking	Double Garage Attached

### Interior

Interior Features	ensuite bathroom
Appliances	Dishwasher-Built-In, Dryer, Oven-Microwave, Refrigerator, Stove-Electric, Washer, Window Coverings
Heating	Forced Air-1, Natural Gas
Fireplace	Yes
Fireplaces	Stone Facing
Stories	2
Has Basement	Yes
Basement	Full, Finished

### Exterior

Exterior	Wood, Stone, Vinyl
Exterior Features	Backs Onto Park/Trees, Not Fenced, Playground Nearby, Treed Lot
Roof	See Remarks

Construction Wood, Stone, Vinyl  
Foundation Concrete Perimeter

### **Additional Information**

Date Listed November 21st, 2024  
Days on Market 133  
Zoning Zone 58  
Condo Fee \$518

DATA IS DEEMED RELIABLE BUT IS NOT GUARANTEED ACCURATE BY THE REALTORS® ASSOCIATION OF EDMONTON. COPYRIGHT 2025 BY THE REALTORS® ASSOCIATION OF EDMONTON. ALL RIGHTS RESERVED. Trademarks are owned or controlled by the Canadian Real Estate Association (CREA) and identify real estate professionals who are members of CREA (REALTOR®, REALTORS®) and/or the quality of services they provide (MLS®, Multiple Listing Service®)

Listing information last updated on April 3rd, 2025 at 4:17pm MDT